

بِسْمِ اللَّهِ الرَّحْمَنِ الرَّحِيمِ

ANNUAL REPORT 2020

PROF. DR. NADEEM AKHTAR

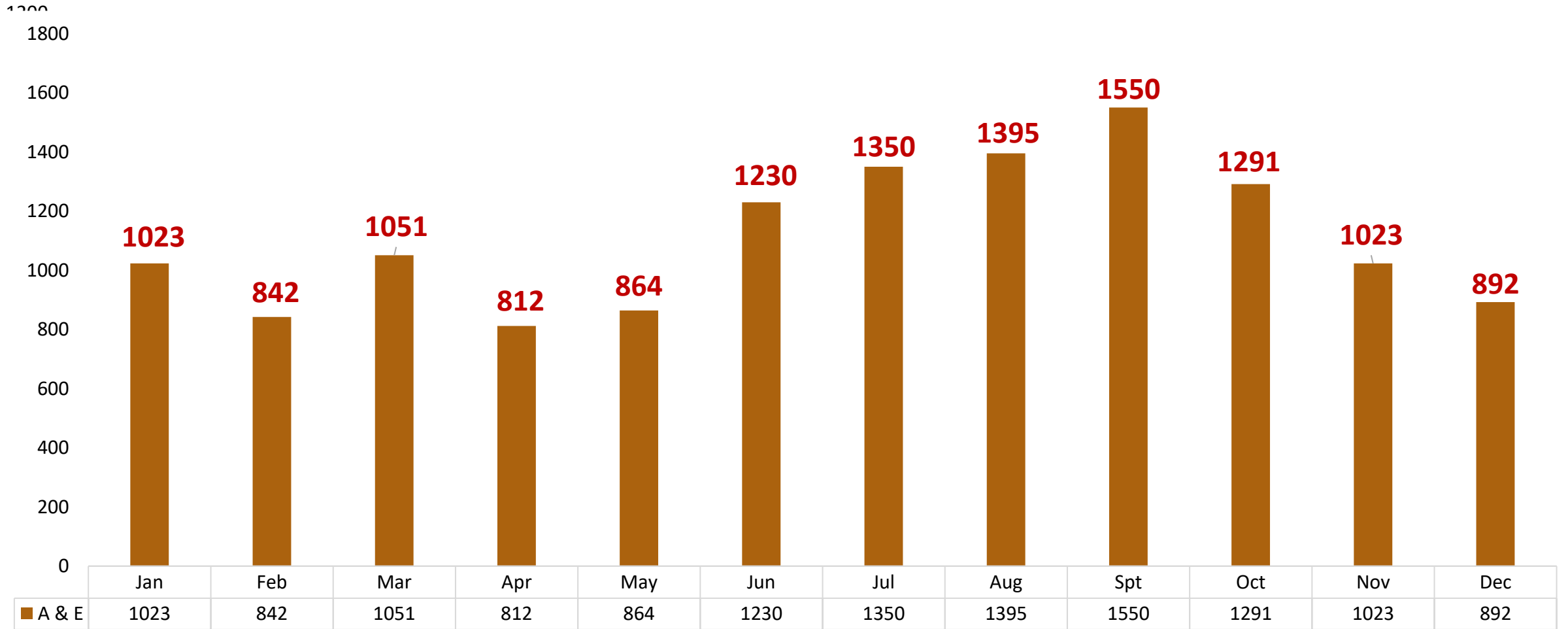
HEAD OF NEUROSURGERY DEPARTMENT
RAWALPINDI MEDICAL UNIVERSITY,
RAWALPINDI



EMERGENCY DEPARTMENT (A&E)

DEPARTMENT OF NEUROSURGERY

Total Patients : 13323

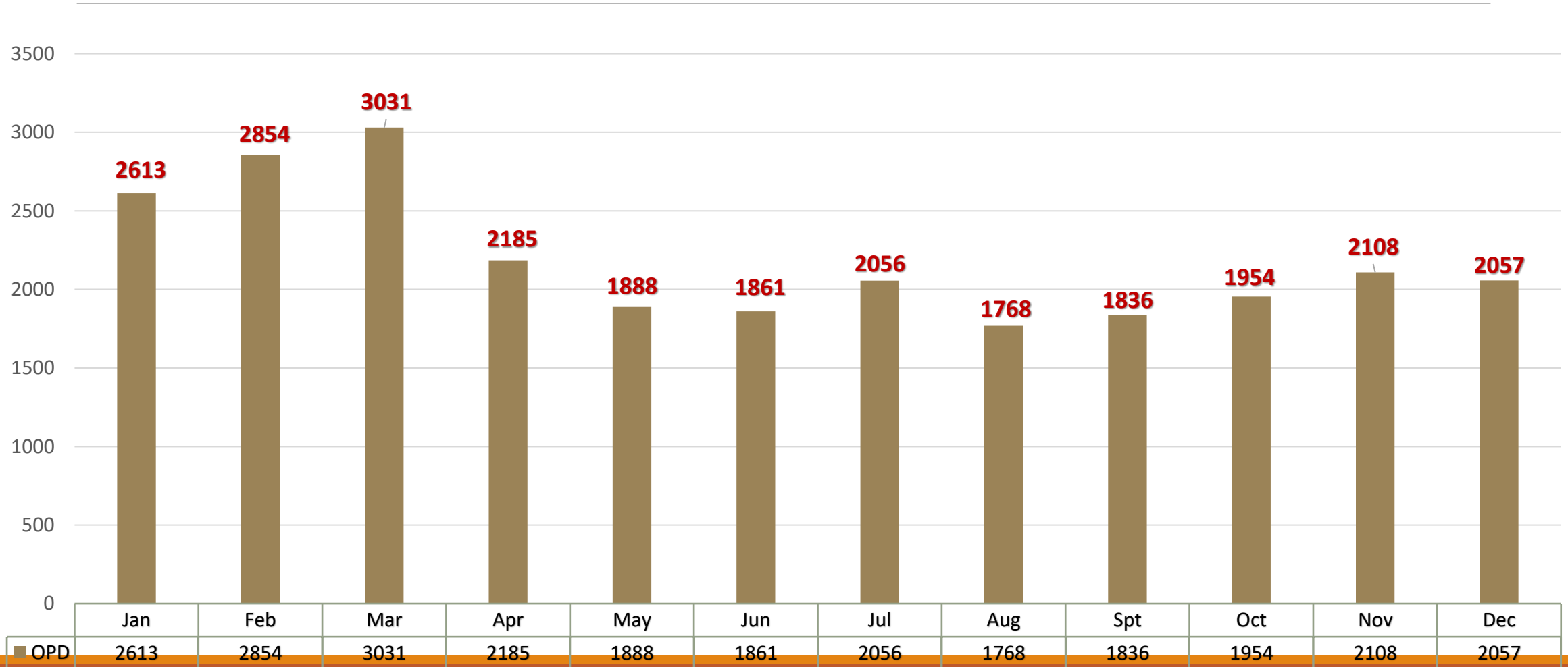




OUT PATIENT DEPARTMENT DHQ(OPD)

DEPARTMENT OF NEUROSURGERY

Total Patients : 26211

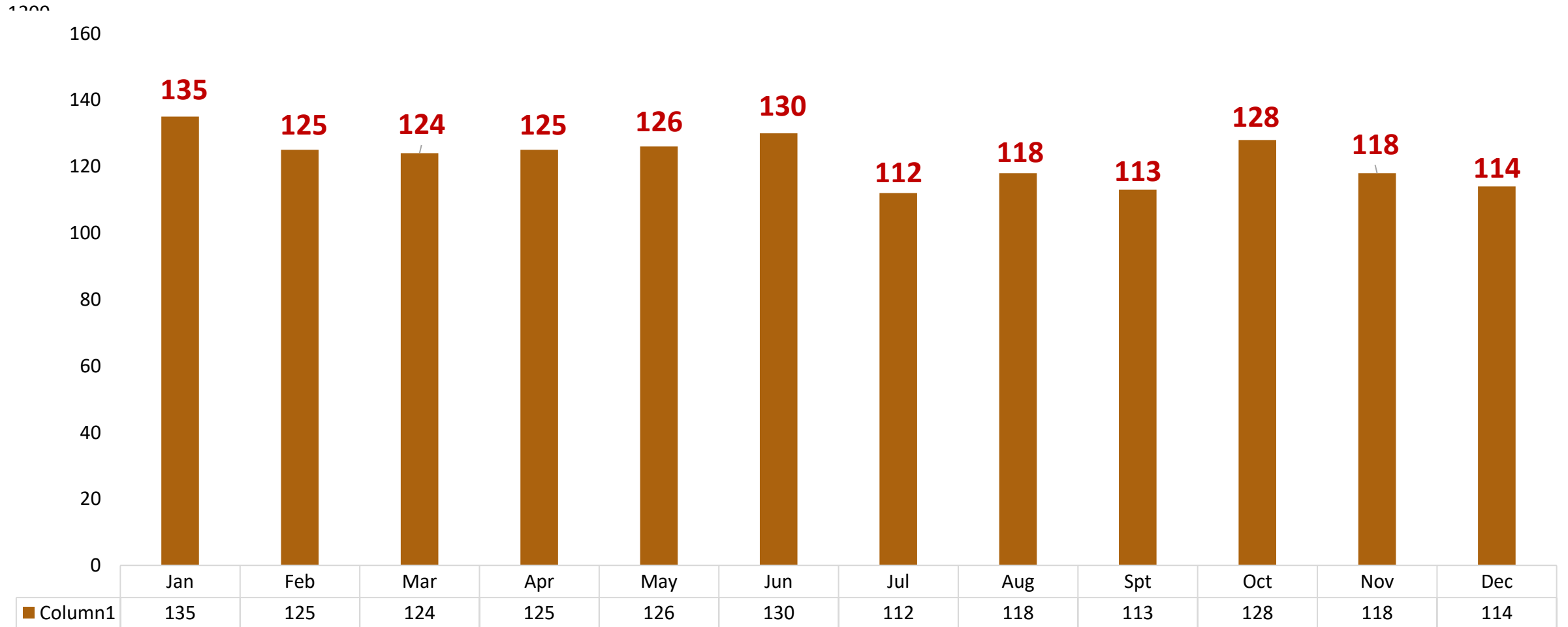




EMERGENCY DEPARTMENT (A&E)

DEPARTMENT OF NEUROSURGERY

Total Admission : 1468

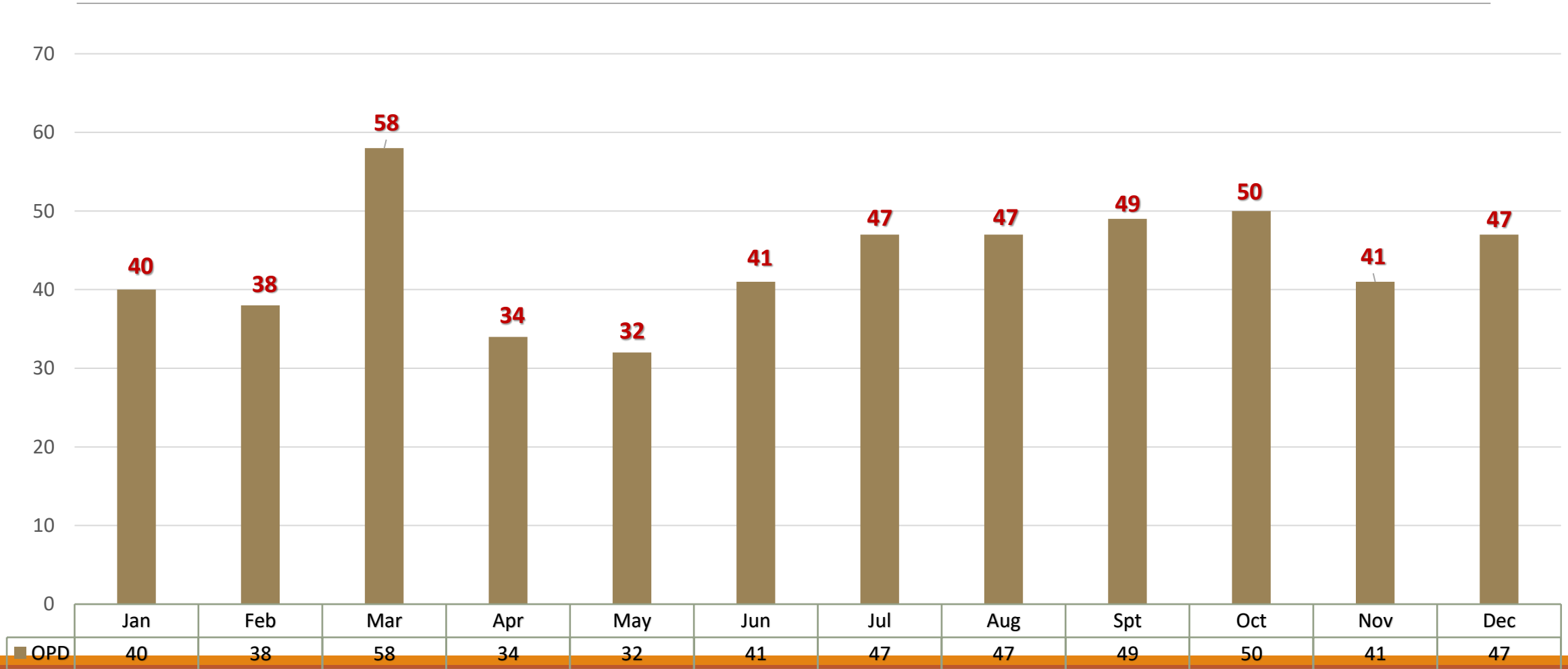




OUT PATIENT DEPARTMENT DHQ(OPD)

DEPARTMENT OF NEUROSURGERY

Total Admissions: 524

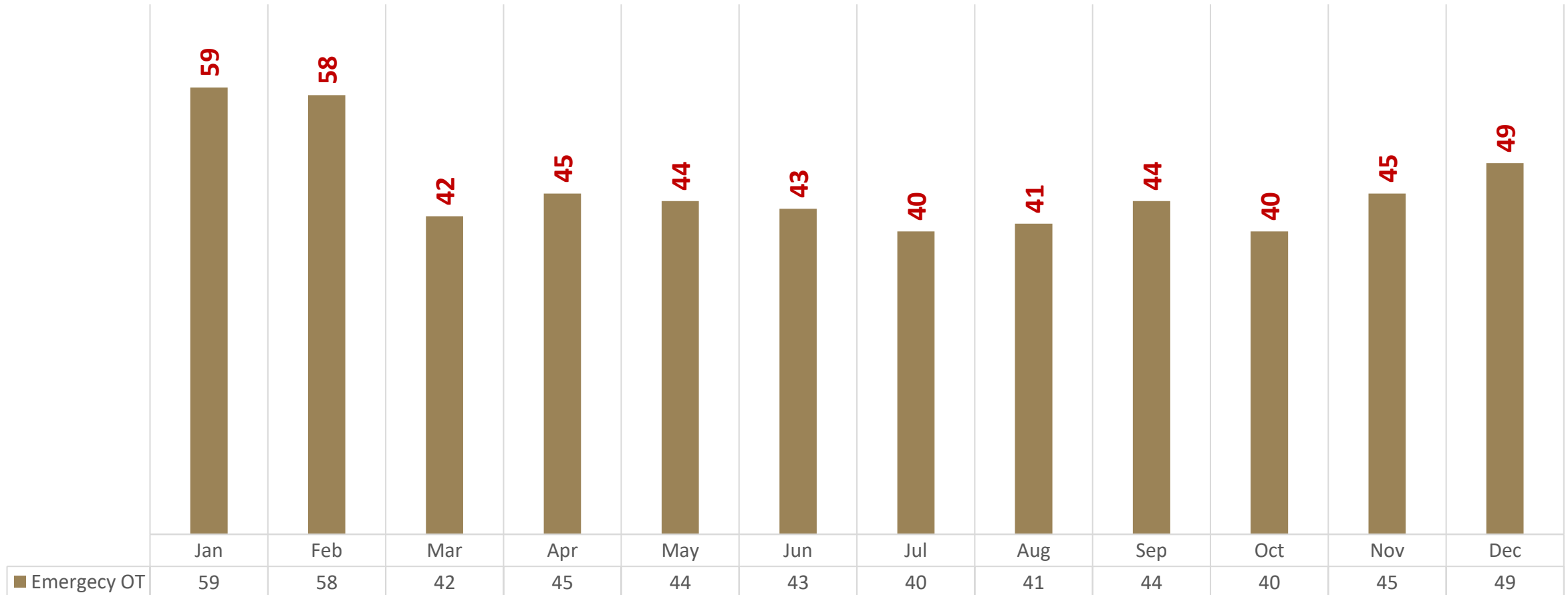




EMERGENCY NEUROSURGERY OPERATION THEATER

DEPARTMENT OF NEUROSURGERY

Total Patients:550

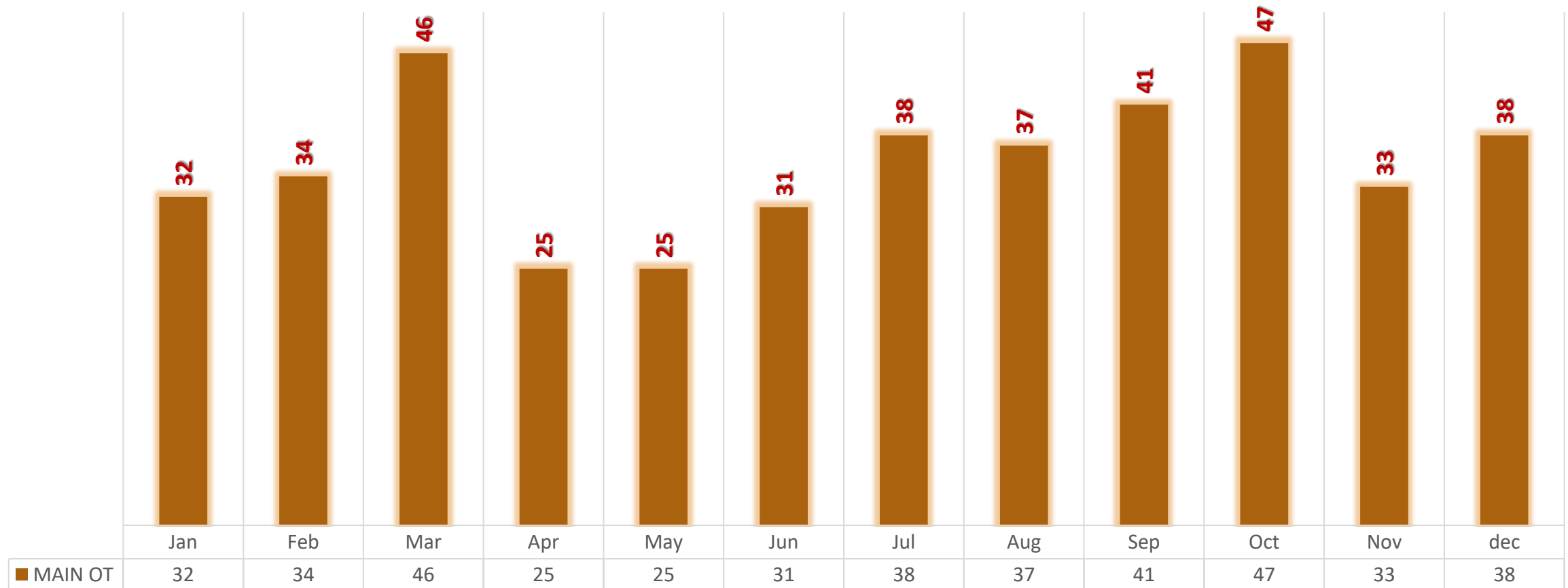




ELECTIVE NEUROSURGERY OPERATION THEATER

DEPARTMENT OF NEUROSURGERY

Total Patients :427

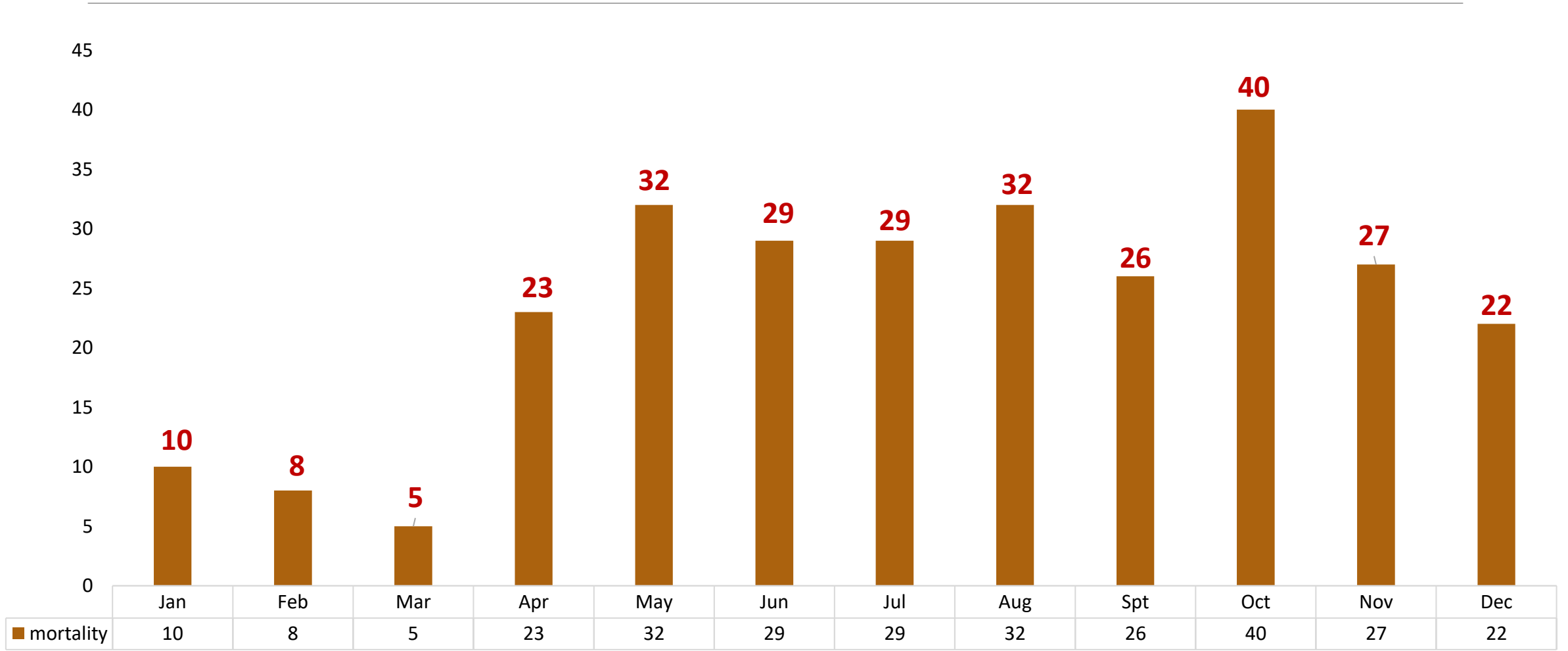




MORTALITY

DEPARTMENT OF NEUROSURGERY

Total Patients : 283



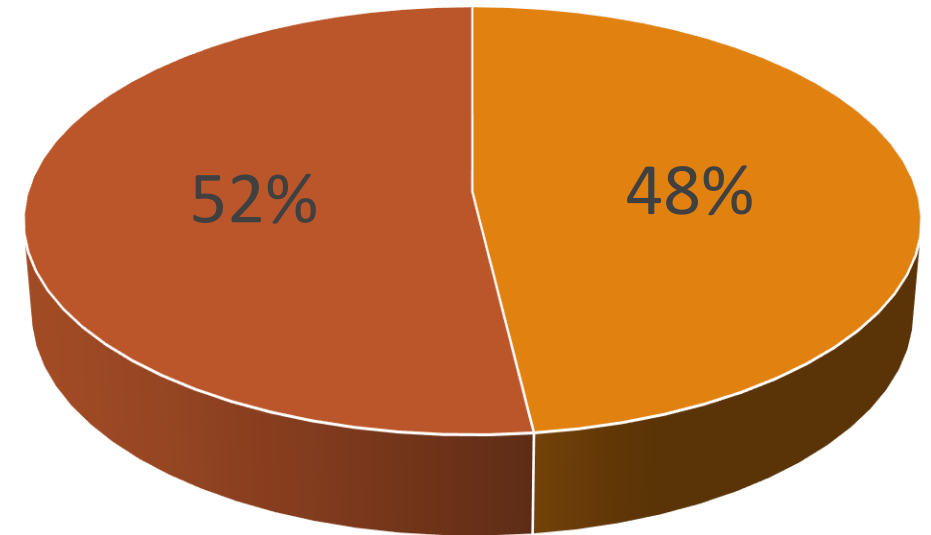


ANNUAL REPORT 2020

DEPARTMENT OF NEUROSURGERY RAWALPINDI MEDICAL UNIVERSITY, RAWALPINDI

Total Patients Seen (OPD + ER)

Female	20522
Male	19012
Total	39534



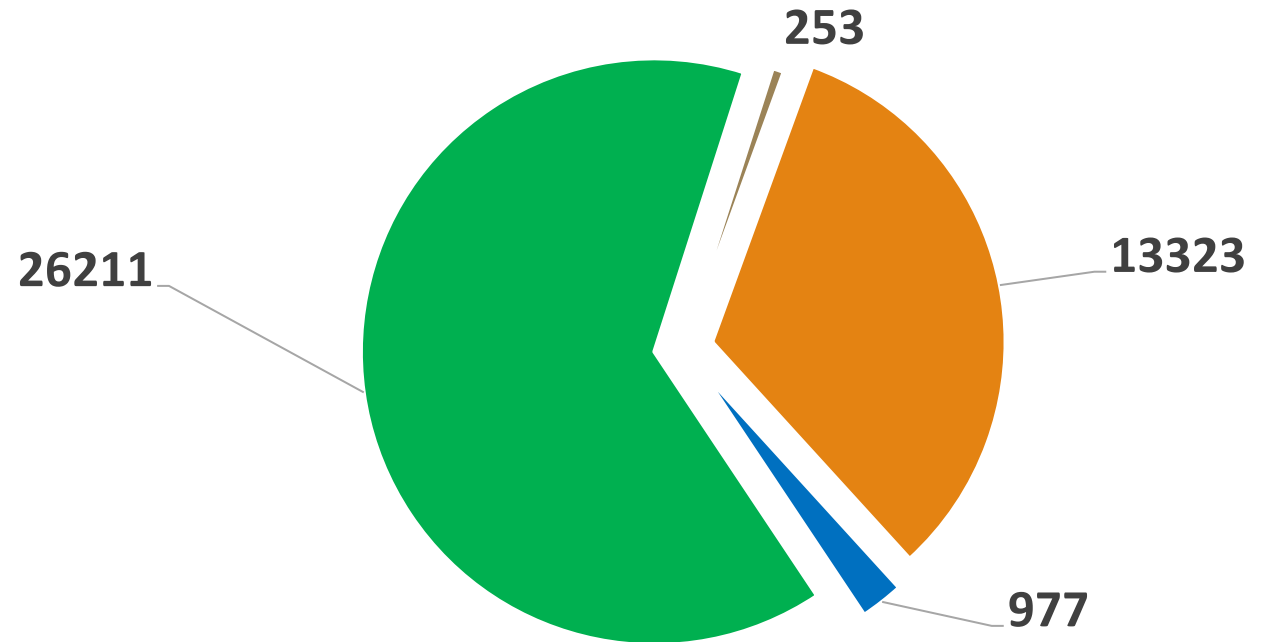
■ Male ■ female ■ ■



ANNUAL REPORT 2020

DEPARTMENT OF NEUROSURGERY RAWALPINDI MEDICAL UNIVERSITY, RAWALPINDI

ACCIDENT & EMERGENCY	13323
NEUROSURGERY OPERATION THEATER (Main OT & ER OT)	977
OUT PATIENT DEPARTMENT	26211
MORTALITY	253



- Accident & Emergency
- Neurosurgery OT's
- Out Patient department
- Mortality