



---

## MEDICAL UNIT II HFH/RMU

# REPORT 2020

---

Muhammad Khurram, Nida Anjum, Najia Mahmood

# INTRODUCTION

Medical unit II is a part of medical department of Holy Family Hospital Rawalpindi which is an allied hospital of Rawalpindi Medical University. Medical unit II provides inpatient, outpatient, and Emergency services. The primary objective of medical unit 2 is to provide patient- centered and evidence-based medical care. As a part of Rawalpindi Medical University, the team of Medical Unit II is actively involved in teaching of undergraduate and postgraduate medical Students/Trainees and medical research.

## SERVICES

- Integrated and collaborative care by involving a multidisciplinary team of physicians and surgeons for specialized treatment.
- Preventive medicine care such as screening for blood pressure, diabetes, and screening for cancers etc.
- Diagnosis and Comprehensive management of hospitalized patient.
- Geriatric medicine to care of elderly with special care
- Palliative care for terminally ill patients.
- Patient counselling

# TEAM

## 1. PROFESSOR AND DEAN OF MEDICINE

**DR. MUHAMMAD KHURRAM**

MBBS, FCPS, FRCP

## 2. ASSISTANT PROFESSOR

**DR. FRAMARZ KHAN**

MBBS, FCPS (Med)

## 3. SENIOR REGISTRAR

**Dr. MADEEHA NAZAR**

MBBS, FCPS (Med)

## 4. SENIOR REGISTRAR

**Dr. NAJIA MEHMOOD**

MBBS, FCPS (Med)

## 5. SENIOR REGISTRAR

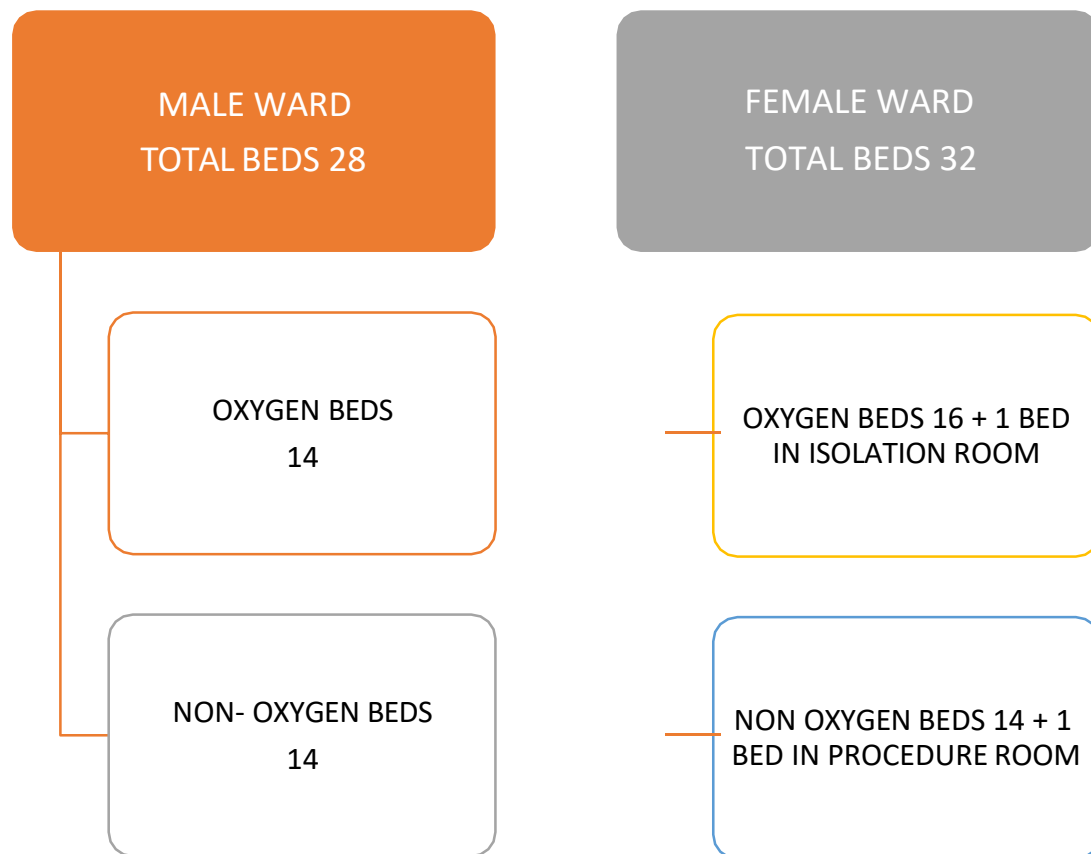
**Dr. NIDA ANJUM**

MBBS, FCPS (Med)

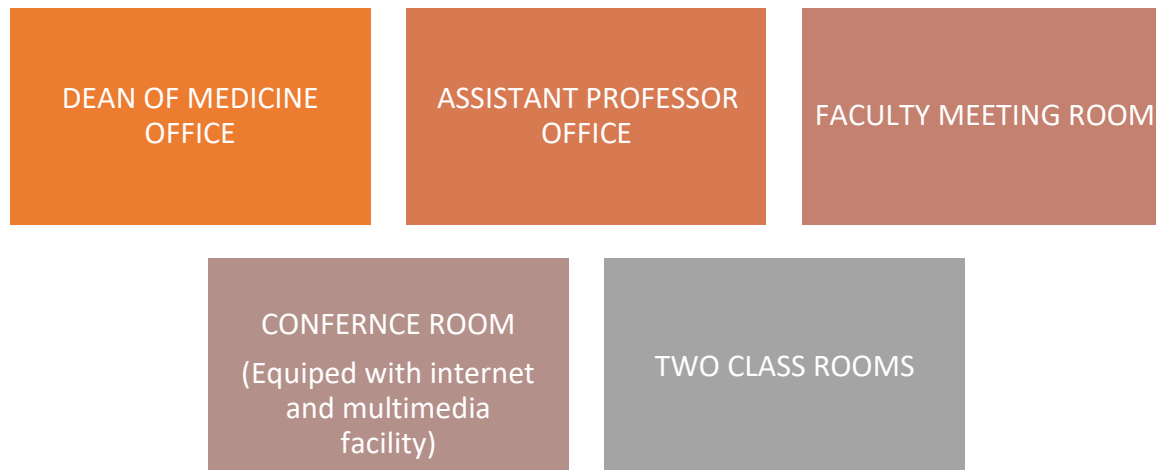
## INFRASTRUCTURE

Medical Unit II is a 60 bedded ward. There are 28 non oxygen, 30 oxygen beds, 1 isolation room, and 1 procedure room. Ward is divided into male and female wing for the separate admission of male and female patients. There are separate rest rooms for male and female doctors and nurses. In addition to that there is separate educational and administrative section to carry out educational activities includes classrooms, conference room, and offices.

## BED STRENGTH OF MEDICAL UNIT II



## TEACHING AND ADMINSTRATIVE SECTIONS



## MEDICAL UNIT II WARD EQUIPMENT LIST

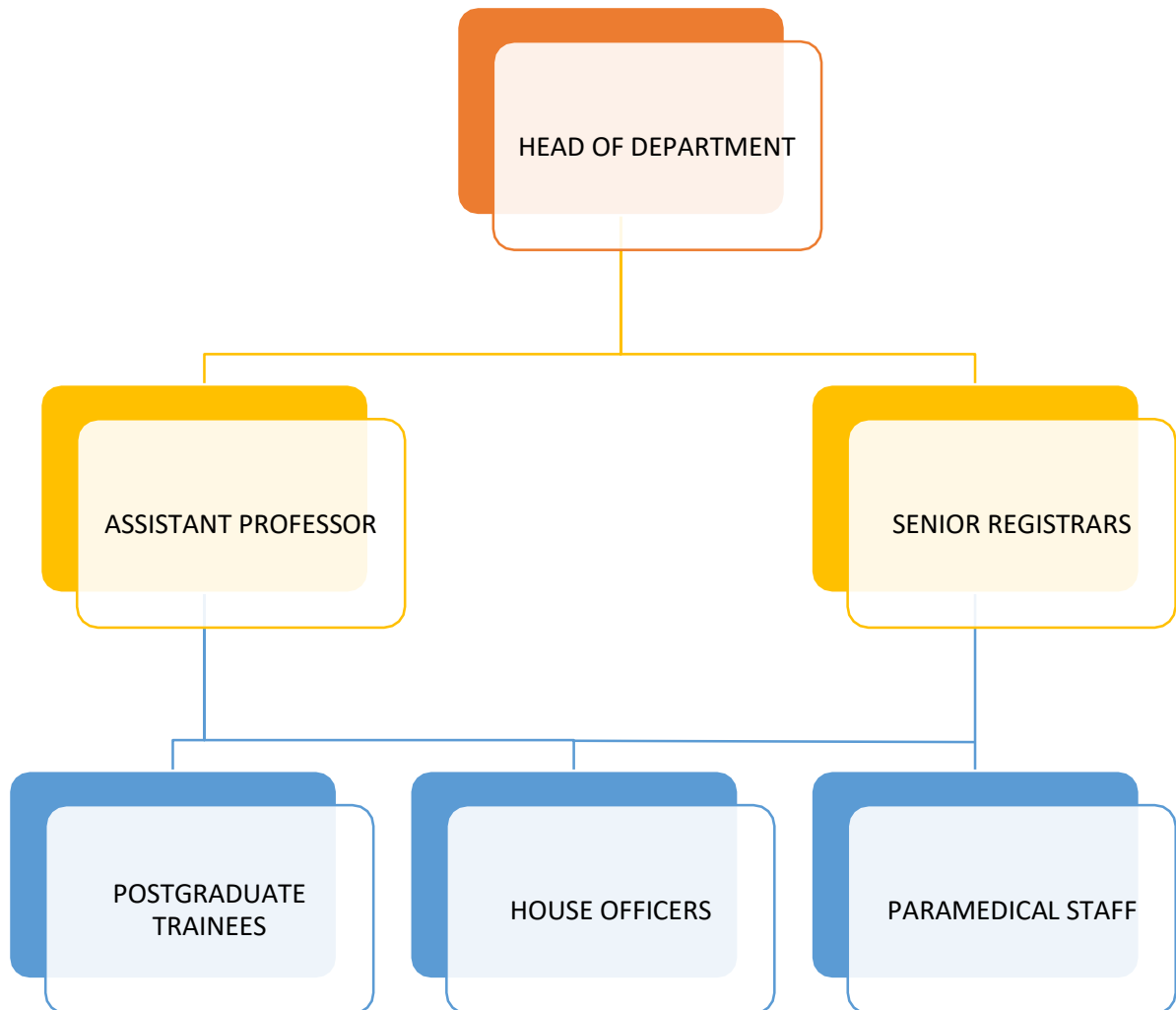
S.NO	NAME OF EQUIPMENT	AVAILABLE	FUNCTIONAL
1	Defibrillator	2	2
2	ECG Machines	2	1
3	Portable Cardiac Monitors	2	5
4	Emergency Trolleys	2	2
5	Portable Suction Machines	2	2
6	Nebulizer Machines	4	4
7	BP apparatus	4	4
8	Stethoscopes	4	4
9	Pulse oximeters	4	4
10	Glucometers	2	2
11	Thermometers	4	4
12	Laryngoscopes	4	4
13	Adult Ambu Bags	4	4
14	Measuring Tapes	4	4
15	Torches	2	2
16	Hammers	2	2
17	Tunning Forks (128 HZ)	2	2
18	Examination Couches	2	2



## WORKFORCE OF MU II

Professor	01
Associate Professor	Zero
Assistant Professor	01
Senior Registrar	03
Postgraduate Trainees	22
House Officers	33

## HIERARCHY OF MEDICAL UNIT II



## 24 HOUR MEDICAL WARD COVER

Patient care is the priority of Medical Unit II, so it is ensured that there is 24/7 physical cover of doctors and nurses provided to the patient. For this purpose, proper rosters are made and implemented which provide clearly defined duty cover of doctors and nurses.

### PHYSICIAN COVER

- At least two postgraduate trainees and four house officers are physically available in ward and do their 24-hour call.
- Senior Registrar is 2nd on call. He/she is responsible for doing evening round in ward along with post graduate trainee on call. He/she is also responsible for attending interdepartmental calls.
- Assistant Professor and Professor are third and fourth on call, respectively.



### PARAMEDICAL COVER:

- Nursing staff provide 24/7 cover in ward, they work in three shift, morning, evening, and night.
- In each shift there is presence of two ward boys and two security personals at ward entrance gate.

MORNING SHIFT 8:00 am to 2:00 pm	EVENING SHIFT 2:00 pm to 8:00 pm	NIGHT SHIFT 8:00 pm to 8:am
04 Staff Nurses 02 Ward Boys	04 Staff Nurses 02 Ward Boys	04 Staff Nurses 02 Ward Boys

## ACLS CERTIFIED FACULTY MEMBERS OF MU II

1	Dr Madeeha Nazar Senior Registrar MU II
2	Dr Najia Mehmood Senior Registrar MU II

## PATIENT LOAD 2020

Admissions	
Month	Total
January	354
February	291
March	281
April	238
May	227
June	160
July	281
August	264
September	310
October	350
November	278
December	291
<b>TOTAL</b>	<b>3325</b>

## BED OCCUPANCY RATE

2020			
MONTH	MALE	FEMALE	AVERAGE
January	97.22%	91.55%	94.38%
February	96.41%	90.63%	93.52%
March	84.86%	76.75%	80.80%
April	85.25%	82.84%	84.04%
May	97.02%	83.11%	90.06%
June	88.20%	75.00%	81.60%
July	98.02%	85.00%	91.51%
August	84.24%	72.96%	78.60%
September	92.17%	76.27%	84.22%
October	68.85%	60.24%	63.97%
November	68.58%	69.11%	68.88%
December	82.75%	91.84%	87.90%

## AVERAGE LENGTH OF INPATIENT STAY

MONTH	AVERAGE LENGTH OF STAY
January	8 days
February	5 days
March	5 days
April	3.5 days
May	6 days
June	4.2 days
July	4 days
August	5 days
September	5 days
October	4.5 days
November	5 days
December	4.5 Day
<b>Total</b>	59.7

## MONTHLY MORTALITY

2020			
MONTH	MALE	FEMALE	TOTAL
January	45	41	86
February	39	30	69
March	36	28	64
April	30	24	54
May	29	23	52
June	31	20	51
July	25	23	48
August	16	26	42
September	12	16	28
October	28	36	64
November	18	25	43
December	18	23	41
Total	327	315	642



## ADMISSION VS MORTALITY

	MORTALITY 2020		
MONTH	ADMISSION	MORTALITY	%
January	374	86	22.99%
February	305	69	22.62%
March	290	64	22.06%
April	280	54	19.28%
May	295	52	17.62%
June	275	51	18.54%
July	310	48	15.48%
August	276	42	15.21%
September	240	28	11.66%
October	345	58	16.81%
November	278	43	15.46%
December	291	41	14.08%

## GENDER WISE MORTALITY

MONTH	MALE			FEMALE		
	ADMISSIONS	EXPIRES	%	ADMISSIONS	EXPIRES	%
January	197	42	21.31	177	44	24.85
February	141	35	24.82	167	34	20.35
March	161	30	18.63	158	34	21.51
April	145	34	23.44	123	20	16.26
May	137	25	18.24	131	27	20.61
June	150	34	22.67	129	17	13.17
July	156	21	13.46	179	27	15.08
August	124	17	13.70	148	25	16.89
September	100	10	10.00	130	18	13.84
October	166	36	21.68	179	22	12.29
November	170	17	10.58	108	26	23.14
December	128	18	14.06	163	23	14.11
Total	1775	319	17.95	1792	317	17.68

## COMMON DISEASES MANAGED AT MU II

S.NO.	DISEASES
1	Decompensated liver disease and the complications
2	COPD, Asthma, Lung fibrosis, and Bronchiectasis
3	Chronic kidney disease
4	Stroke and the complications
5	Infections
6	Anemia

# CLINICAL TEACHING

Faculty of MU-II, HFH/RMU is involved in clinical teaching of

1. Post Graduate Trainees, Medicine and Allied
2. House officers
3. Nurses
4. Final year MBBS
5. 3<sup>rd</sup> year MBBS
6. Emergency Medicine Foundation Program
7. Family Medicine Certification Course

# LECTURES

Faculty of MU II, HFH is involved in medicine lectures of following MBBS classes

1. 3<sup>rd</sup> year
2. 4<sup>th</sup> year
3. Final year
4. MD Trainees

## END BLOCK EXAMINATION (EBE)

Concept of End Block Examination (EBE) for Final Year MBBS was conceptualized as well as materialized in 2019. Three EBE were conducted in the same year. 2020 EBE were delayed due to COVID-19 pandemic. The first EBE of 2020 will be conducted on 4<sup>th</sup> and 7<sup>th</sup> November 2020.

## MD TRAINEE CLINICAL EXAMINATION

Concept of MD Trainees Bi Yearly Clinical Examination was conceptualized as well as materialized in 2019.

Two examination were conducted in the year 2019. 2020 examinations were delayed due to COVID-19 pandemic. The first examination will be conducted in November 2020.

## JRMC AND SJRMC

Student Supplement of Journal of Rawalpindi Medical College (JRMC) was not published in 2017 and 2018. All efforts were utilized to get articles, speedy review, and publication. Backlog was cleared in this regard after the responsibility given to Prof Muhammad Khurram.

After publication of the first issue of 2019, SJRMC responsibility was shifted to Prof Shagufta Saeed. New Team was provided complete second issue of 2019 SJRMC which has been published as well.

As Prof Nadeem Akram showed his inability to continue working as Editor of JRMC, its Editorship responsibility has been shifted to Professor Muhammad Khurram. With the Dynamic efforts of Dr Arsalan Manzoor, Associate Editor JRMC & Team, JRMC has been indexed in Directory of Open Access Journals (DOAJ) and Crossref. All effort is now being done to further improve JRMC.



## PUBLICATIONS – 2019-20

1. Analysis of COVID-19 mortality in Allied Hospitals of Rawalpindi Medical University Pakistan. Biomedica 2020; 36: 260-4.
2. Rawalpindi Medical University Pakistan COVID-19 pandemic and Department of Medicine, Rawalpindi Medical University. JPMC 2020; 24(2):100-2.
3. Assessment of COVID-19 related fatalities in tertiary care hospitals of Rawalpindi Medical University Pakistan. JPMC 2020; 24 (Supp-1). Available from: <https://www.journalrmpc.com/index.php/JPMC/article/view/1422>
4. Effects of a high-dose 24-h infusion of tranexamic acid on death and thromboembolic events in patients with acute gastrointestinal bleeding (HALT-IT): an international randomised, double-blind, placebo-controlled trial. Lancet 2020; 395: 1927-36.
5. An overview of preliminary COVID-19 cases admitted in Rawalpindi Institute of Urology & Transplantation Pakistan. Res & Rev Health Care Open Acc J 5(2)-2020. RRHOAJ.MS.ID.000210. DOI:10.32474/RRHOAJ.2020.05.000210.
6. Publishing medical research in Pakistan; challenges and the way forward. Journal of Rawalpindi Medical College (JPMC); 2020; 24(1): 1-2
7. Ghost writing and plagiarism. Journal of Rawalpindi Medical College; 2019;23(S-2): 64-65.
8. First report of Chikungunya fever in Rawalpindi, Pakistan. East Mediterr Health J 2019
9. Pulmonary Infection with Mycobacterium fortuitum. Clin Case Rep Open Access 2019;2(3):129.

10. Gender based differences in patients of poisoning managed at a Medical Unit.  
JPak Med Assoc 2019; 69 (07): 1025-8.
11. Secondary Fahr's disease; a consequence of post-thyroidectomy hypoparathyroidism. Eur J Case Rep Intern Med 2019; 6(6): 001109.
12. Takayasu's arteritis presenting as ischemic stroke in young patient. Journal of Rawalpindi Medical College (JPMC) 2019; 23 (S-1): 59-60.
13. Tuberous sclerosis: a patient who presented with fits. Journal of Rawalpindi Medical College (JPMC) 2019; 23 (S-1): 61-3.
14. Characteristics of probable severe fever with thrombocytopenia syndrome patients: a perspective study from Pakistan. International Journal of Medicine in Developing Countries 2019;3(2):001–007  
(<https://doi.org/10.24911/IJMDC.51-1544507442>)

## WORKSHOPS/CONFERENCES/TEACHING

### SESSIONS/PAPERS PRESENTATION-

#### ATTENDED/CONDUCTED/ARRANGED IN 2019-2020

1. 01 day, "Acute Stroke Intervention and Awareness Symposium" Collaboration of Rawalpindi Institute of Cardiology and Rawalpindi Medical University (22 October 2020),
2. 01 day, "Learning and Teaching" workshop by Department of Medical Education, Rawalpindi Medical University (29 September 2020),
3. 01 day, "PGT Research Conference" Rawalpindi Medical University (24 December 2019),
4. 01 day, "Faculty Research Conference" Rawalpindi Medical University (23 December 2019),
5. 01 days, "Acute Respiratory Presentations Contact Session" of Emergency Medicine Foundation Program by Royal College of Emergency Medicine and Rawalpindi Medical University (20<sup>th</sup> December 2019).
6. 01 days, "Diabetes Module" of Family Physicians Certificate Course by Rawalpindi Medical University (9<sup>th</sup> November 2019).
7. 01 days, "Respiratory Module" of Family Physicians Certificate Course by

Rawalpindi Medical University (5<sup>th</sup> October 2019).

8. 01 days, “Train the Trainer” workshop of Emergency Medicine Foundation Program conducted by The Royal College of Emergency Medicine, UK, held at RMU, Rawalpindi (18<sup>th</sup> June 2019).
9. Medical Journalism: challenges and solutions. RMU International Conference, RMU, Rawalpindi (22<sup>nd</sup> March 2019).
10. 01-day Workshop on “Role of EBPS/EVS for staging lung Carcinoma, RMU International Conference, RMU, Rawalpindi (20<sup>th</sup> March 2019).
11. 01-day Workshop on “Utilizing RCT appraisal for patient care”, RMU International Conference, RMU, Rawalpindi (4<sup>th</sup> March 2019).
12. 01-day, Workshop on “Basic Spirometry”, RMU International Conference, RMU, Rawalpindi (4<sup>th</sup> March 2019).
13. 01-day Workshop on “Utilizing RCT appraisal for patient care”, RMU International Conference, RMU, Rawalpindi (4<sup>th</sup> March 2019).
14. 01-day, Workshop on “Basic Spirometry”, RMU International Conference, RMU, Rawalpindi (4<sup>th</sup> March 2019).
15. 01-day, Workshop on “Utilizing RCT appraisal for patient care”, RMU International Conference, RMU, Rawalpindi (4<sup>th</sup> March 2019).
16. 01-day on Research Paper Writing, RMU International Conference, RMU, Rawalpindi (05 February 2019).

# NEW CONCEPTS

## **EBE**

End Block Examination of Final Year MBBS has been employed for internal assessment of students at the end of their 3 monthly medicine and allied rotation since 2018.

## **MD Trainees TOACS**

6 monthly Task Oriented Assessment of Clinical Skills (TOACS) has been introduced since last year.

## **Standardized, uniform clinical rotation examination for 3<sup>rd</sup>, 4<sup>th</sup>, and Final year Medicine MBBS**

All efforts are being employed for this purpose.

## **Online teaching of 3<sup>rd</sup>, 4<sup>th</sup>, and Final Medicine MBBS during COVID-19.**

**Telemedicine was started during COVID-19 Pandemic to provide risk free patient care.**