



# **Dengue 2024**

## **RMU & Allied Hospitals, Rwp**

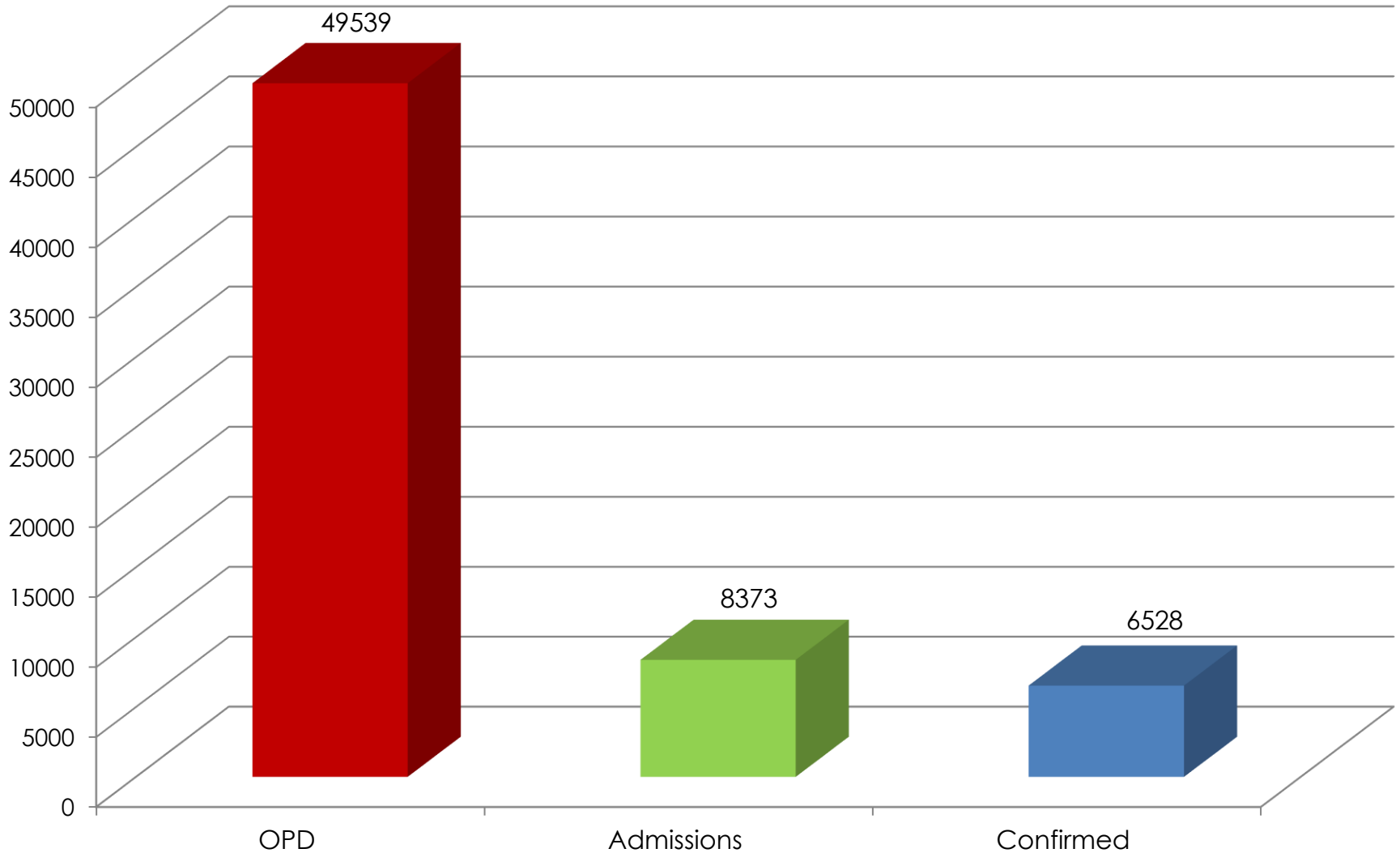
## DATA OF DENGUE PATIENTS, RMU ALLIED HOSPITALS

1<sup>st</sup> Jan – 21 Dec 2024

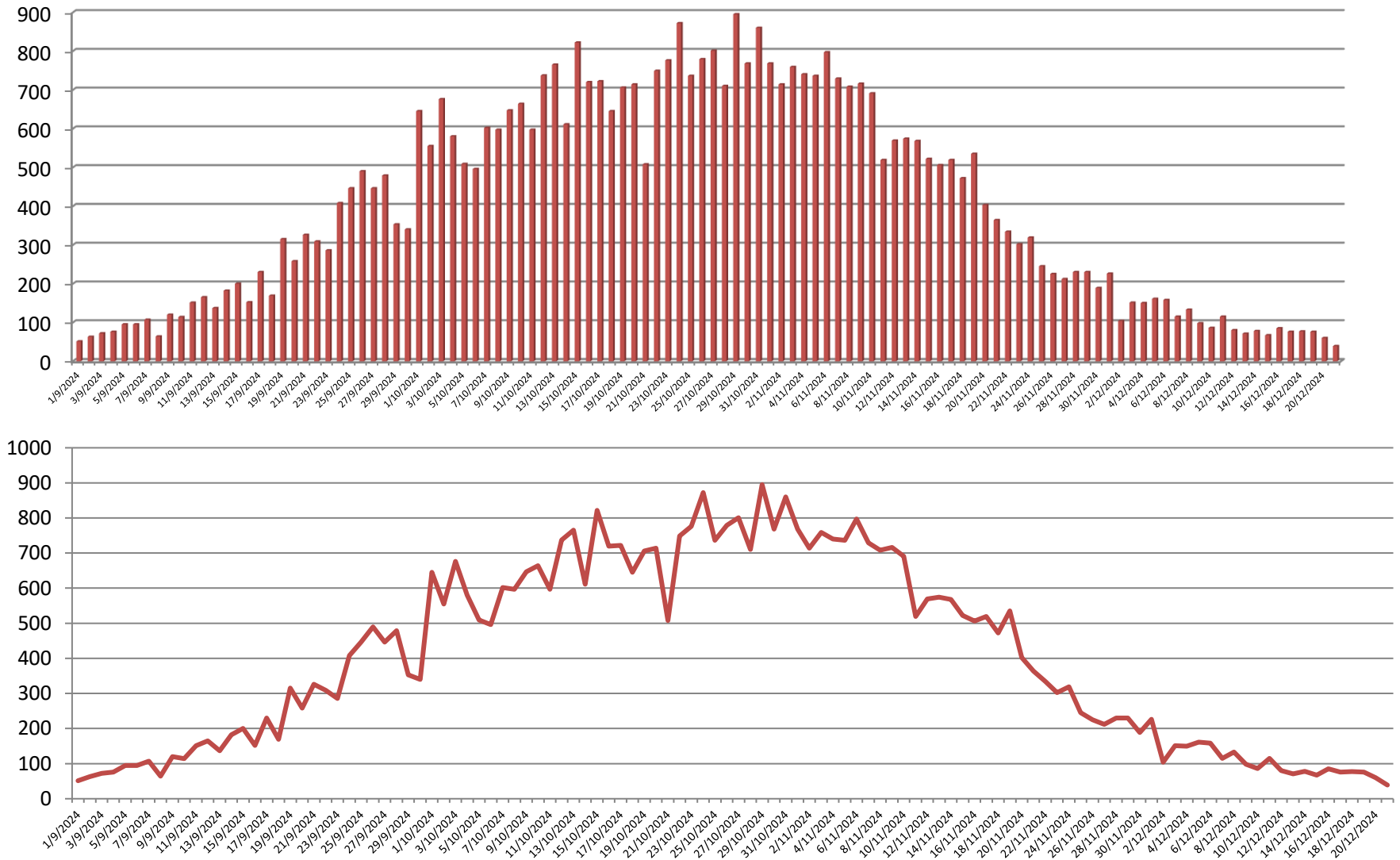
SL	INFORMATION REGARDING	HOLY FAMILY HOSPITAL	BENAZIR BHUTTO HOSPITAL	RAWALPINDI TEACHING HOSPITAL	TOTAL
1	Patients registered in Outdoor patient department (OPD)	21158	21590	6791	49539
2	Patients admitted	4670	2693	1010	8373
3	Confirmed Patients (Dengue fever)	3638	2082	808	6528
4	Patients currently Admitted	03	-	-	03
5	Patients admitted during last 24 hours	-	-	-	-
6	Patients discharged in last 24 hours	04	-	-	04
7	Patients Presented to (OPD) in last 24 hours	25	-	14	39
8	Confirmed Patients in last 24 hours	-	-	-	-
9	Confirmed DHF admitted patients	-	-	-	-
10	Confirmed DSS admitted patients	-	-	-	-
11	Mortality (Total)	07	02	-	09

# DATA OF DENGUE PATIENTS AT ALLIED HOSPITALS RAWALPINDI MEDICAL UNIVERSITY

1<sup>st</sup> Jan – 21 Dec 2024

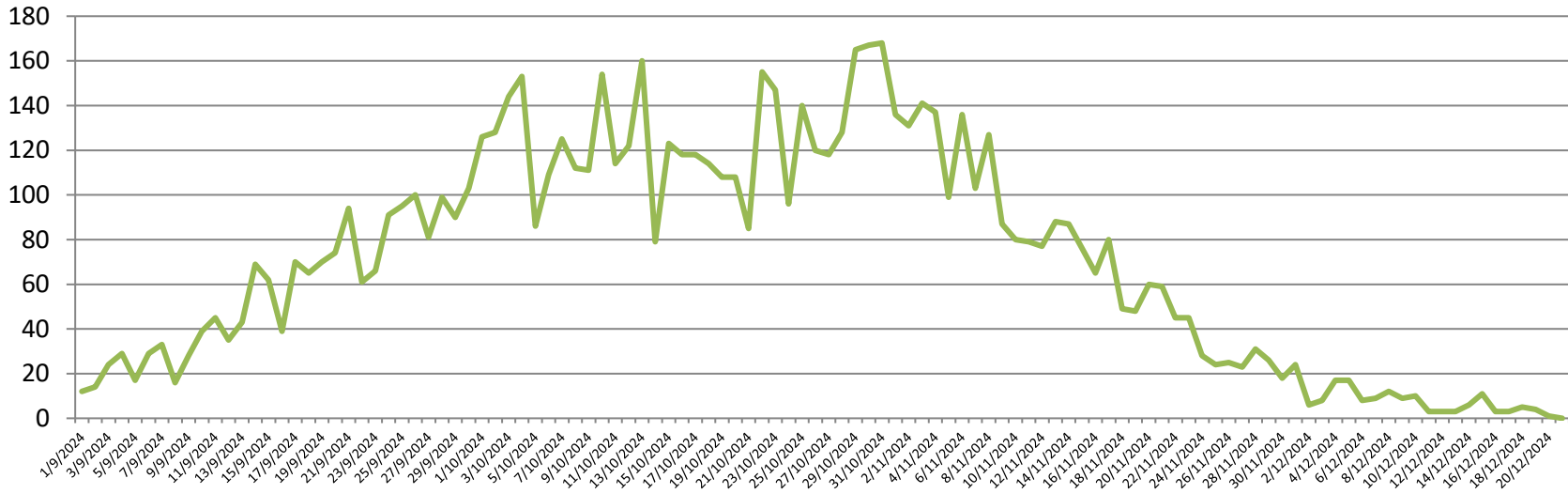
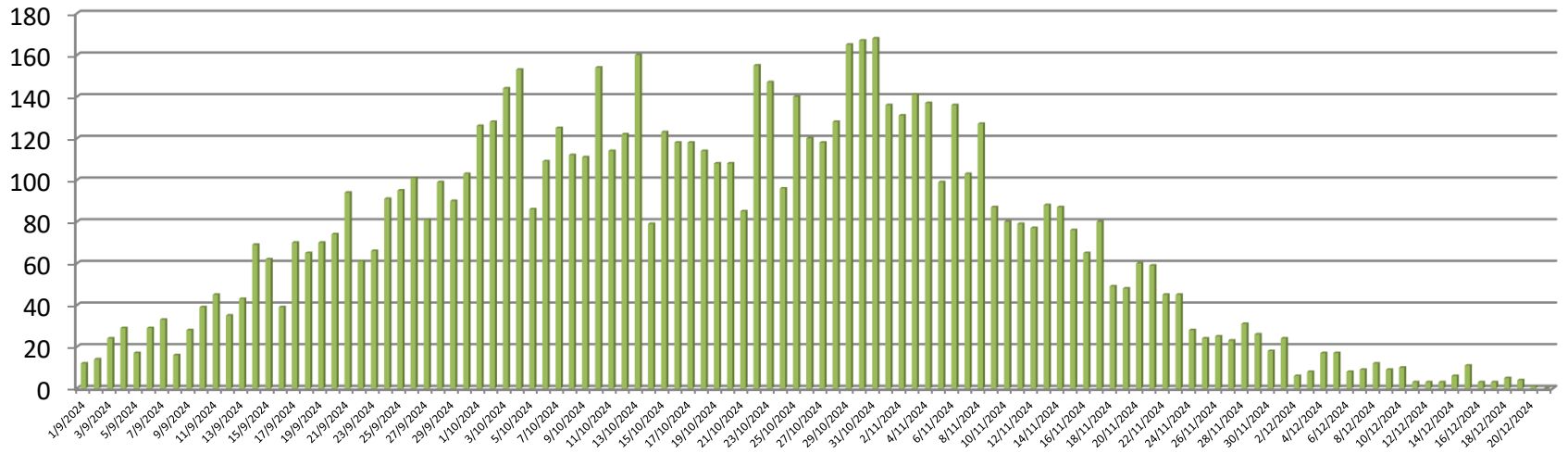


# TREND OF LAST 24 HOURS DENGUE PATIENTS OPD, ALLIED HOSPITALS, 1<sup>st</sup> Sep – 21 Dec 2024



# TREND OF LAST 24 HOURS DENGUE PATIENTS ADMISSIONS ALLIED HOSPITALS,

1<sup>st</sup> Sep – 21 Dec 2024



# TREND OF LAST 24 HOURS DENGUE **CONFIRMED** PATIENTS ALLIED HOSPITALS,

1<sup>st</sup> Sep – 21 Dec 2024

