



Dengue 2024

RMU & Allied Hospitals, Rwp

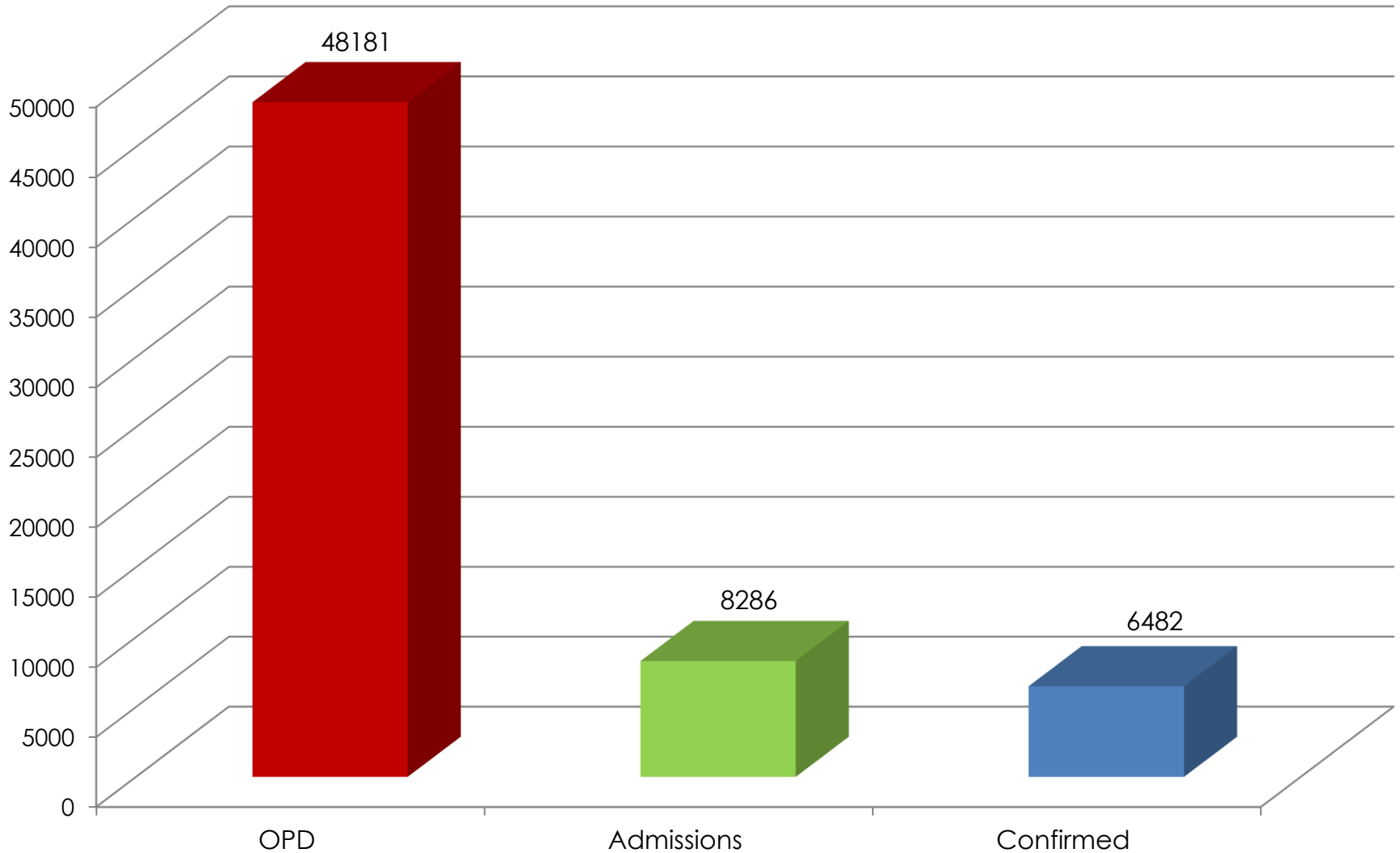
DATA OF DENGUE PATIENTS, RMU ALLIED HOSPITALS

1st Jan – 5 Dec 2024

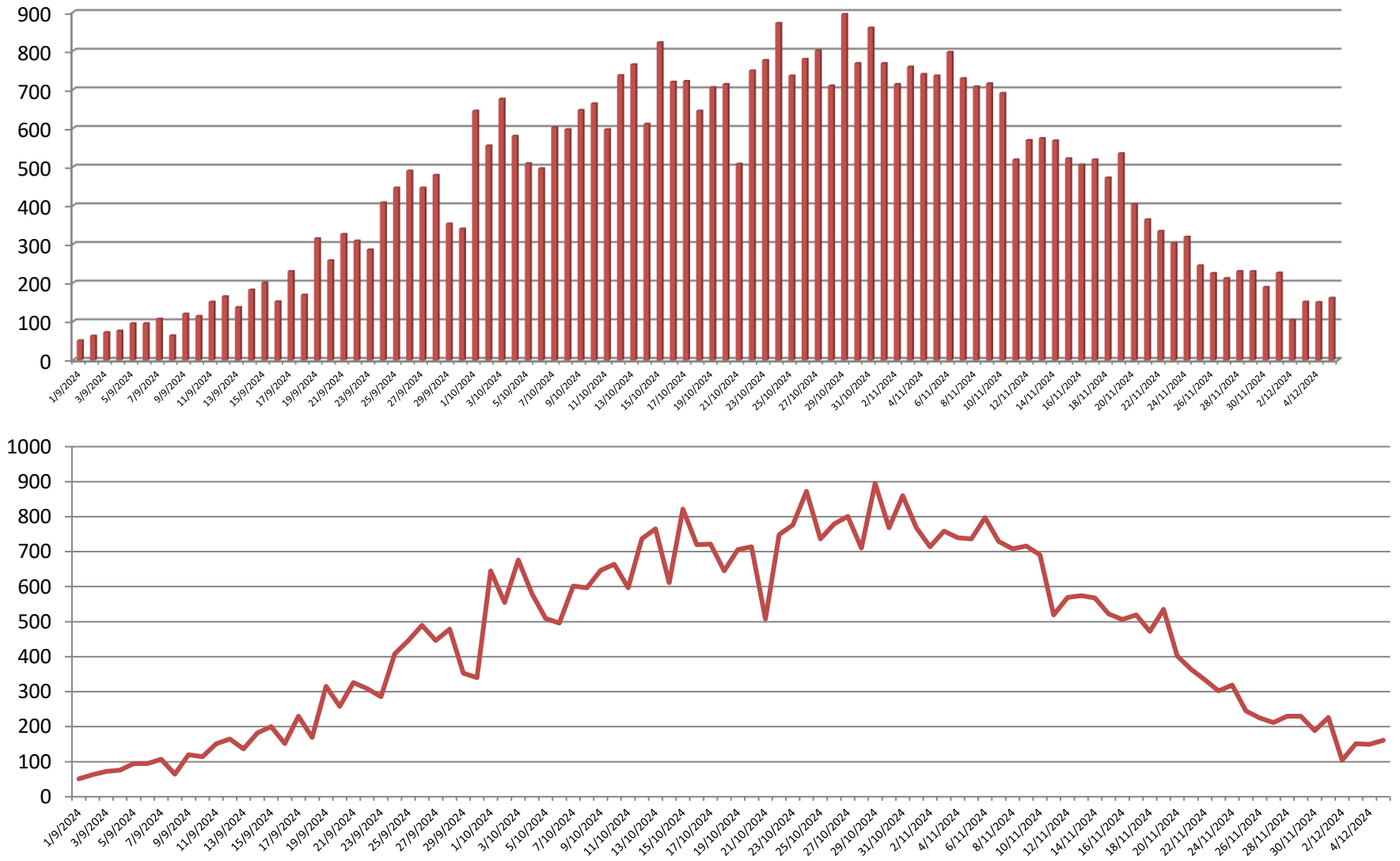
SL	INFORMATION REGARDING	HOLY FAMILY HOSPITAL	BENAZIR BHUTTO HOSPITAL	RAWALPINDI TEACHING HOSPITAL	TOTAL
1	Patients registered in Outdoor patient department (OPD)	20794	21117	6270	48181
2	Patients admitted	4614	2671	1001	8286
3	Confirmed Patients (Dengue fever)	3616	2068	798	6482
4	Patients currently Admitted	17	08	06	31
5	Patients admitted during last 24 hours	11	04	02	17
6	Patients discharged in last 24 hours	07	03	02	12
7	Patients Presented to (OPD) in last 24 hours	53	54	54	161
8	Confirmed Patients in last 24 hours	08	02	03	13
9	Confirmed DHF admitted patients	04	02	01	07
10	Confirmed DSS admitted patients	01	-	-	01
11	Mortality (Total)	07	02	-	09

DATA OF DENGUE PATIENTS AT ALLIED HOSPITALS RAWALPINDI MEDICAL UNIVERSITY

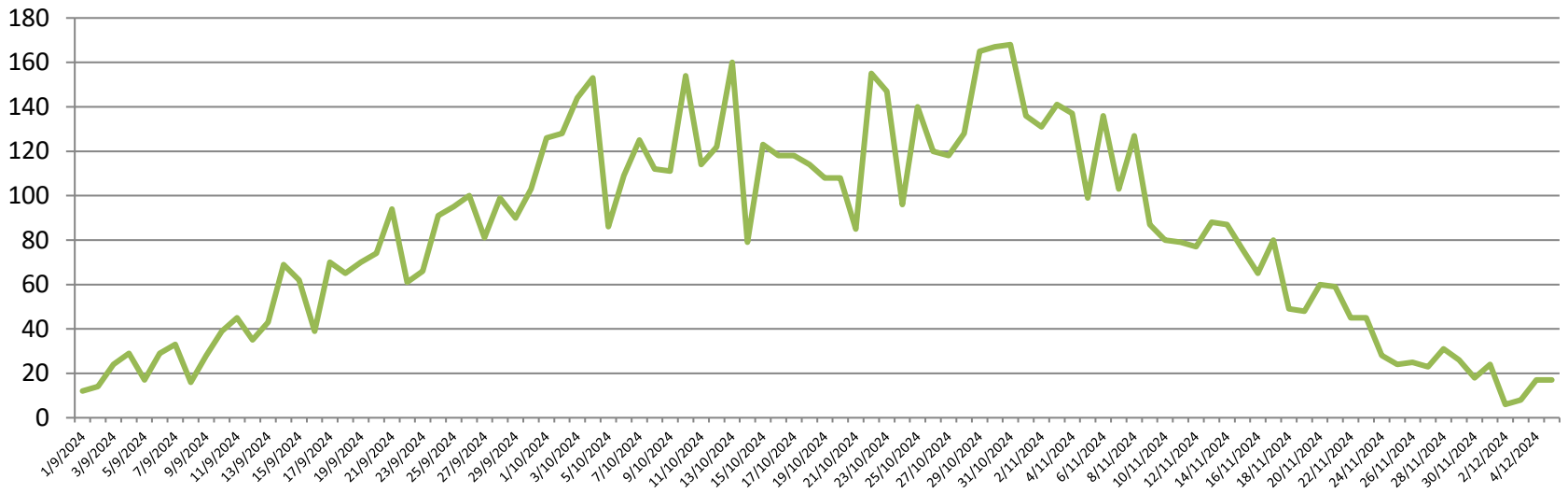
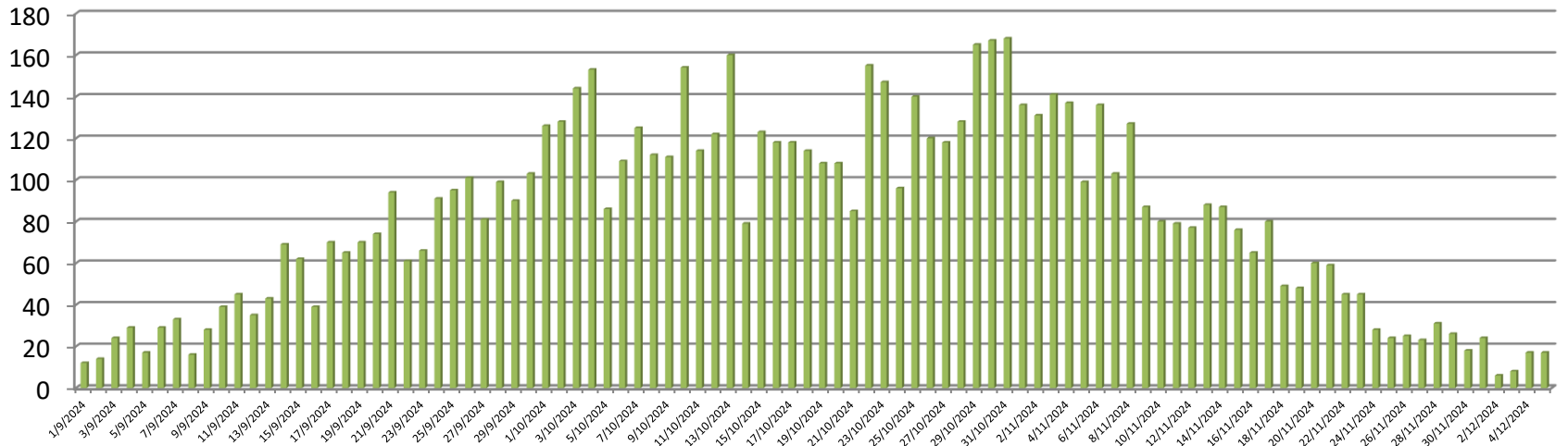
1st Jan – 5 Dec 2024



TREND OF LAST 24 HOURS DENGUE PATIENTS OPD, ALLIED HOSPITALS, 1st Sep – 5 Dec 2024



TREND OF LAST 24 HOURS DENGUE PATIENTS ADMISSIONS ALLIED HOSPITALS, 1st Sep – 5 Dec 2024



TREND OF LAST 24 HOURS DENGUE **CONFIRMED** PATIENTS ALLIED HOSPITALS, 1st Sep – 5 Dec 2024

