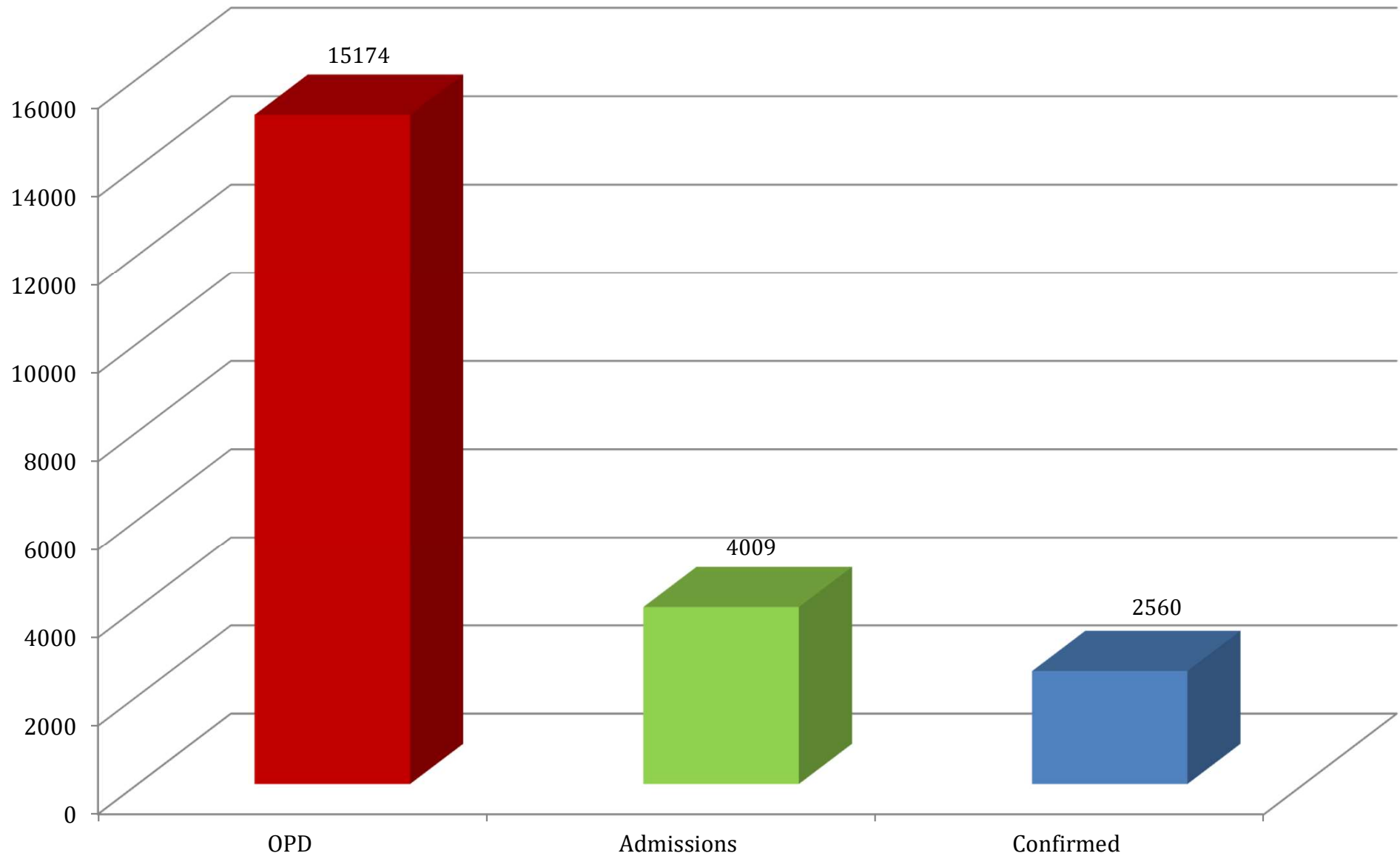


## DATA OF DENGUE PATIENTS AT ALLIED HOSPITALS

1<sup>st</sup> Aug – 15<sup>th</sup> Nov 2023

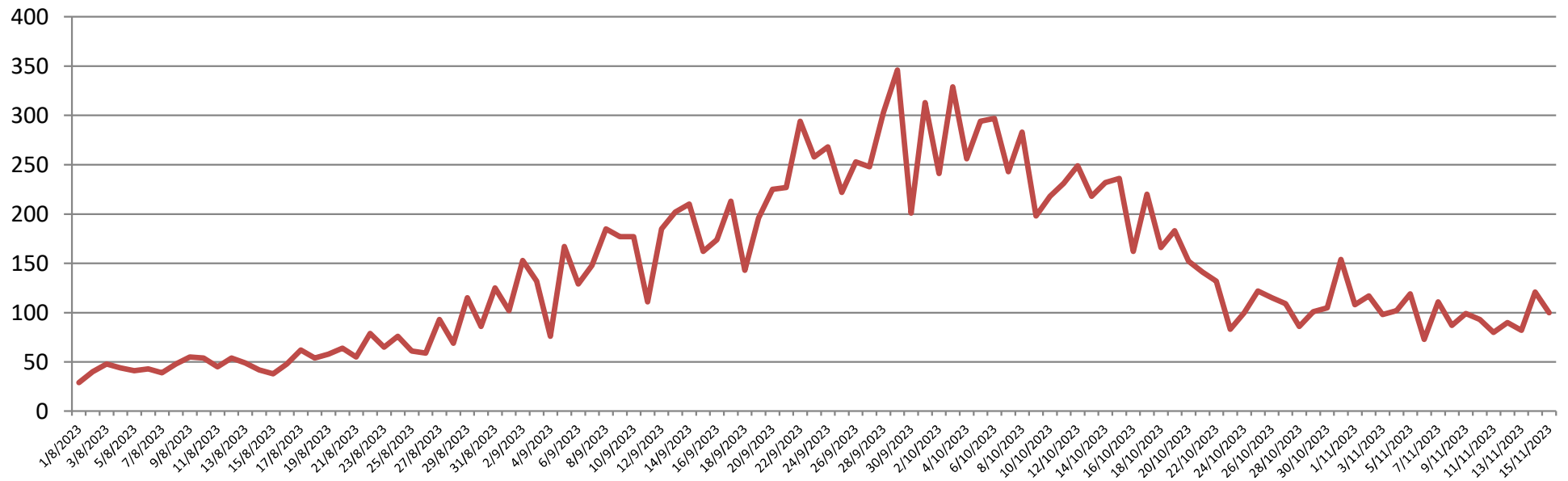
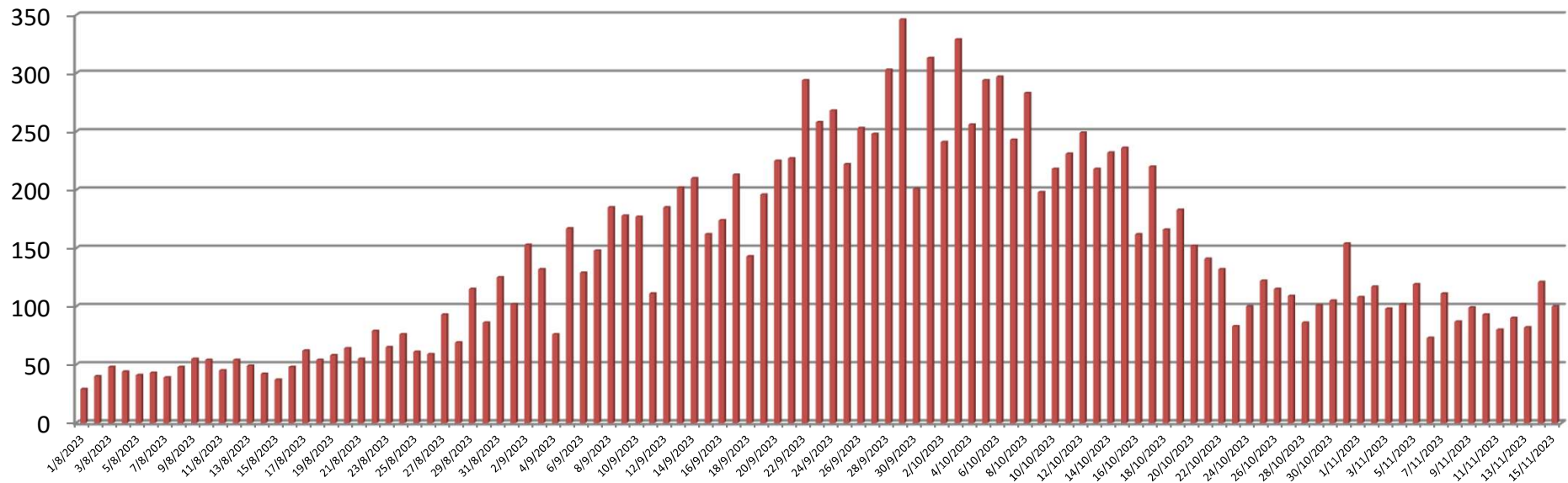
SL	INFORMATION REGARDING	RED CRESCENT HOSPITAL	HOLY FAMILY HOSPITAL	BENAZIR BHUTTO HOSPITAL	DISTRICT HEAD QUARTERS HOSP.	TOTAL
1	Patients registered in Outdoor patient department (OPD)	2211	7441	3985	1537	15174
2	Patients admitted	671	2034	811	493	4009
3	Confirmed Patients (Dengue fever)	394	1288	505	373	2560
4	Patients currently Admitted	53	-	-	-	53
5	Patients admitted during last 24 hours	28	-	-	-	28
6	Patients discharged in last 24 hours	18	-	-	-	18
7	Patients Presented to (OPD) in last 24 hours	100	-	-	-	100
8	Confirmed Patients in last 24 hours	17	-	-	-	17
9	Mortality (Total)	-	-	-	-	-

**DATA OF DENGUE PATIENTS AT ALLIED HOSPITALS  
RAWALPINDI MEDICAL UNIVERSITY  
1<sup>st</sup> Aug - 15<sup>th</sup> Nov 2023**



# TREND OF LAST 24 HOURS DENGUE PATIENTS **OPD**, ALLIED HOSPITALS,

1<sup>st</sup> Aug To 15<sup>th</sup> Nov 2023



# TREND OF LAST 24 HOURS DENGUE PATIENTS **ADMISSIONS ALLIED** HOSPITALS, 1<sup>st</sup> Aug to 15<sup>th</sup> Nov 2023

