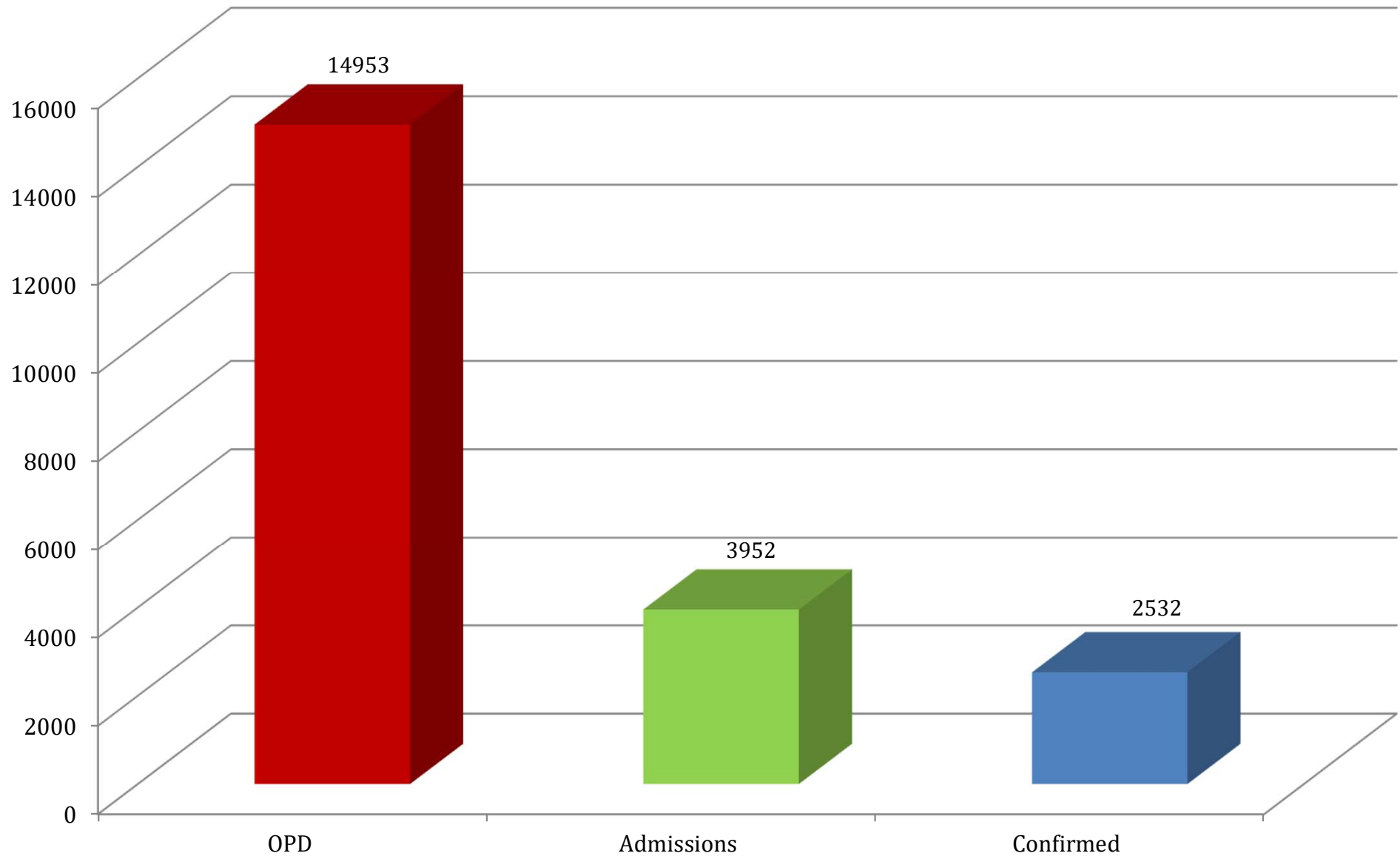


DATA OF DENGUE PATIENTS AT ALLIED HOSPITALS

1st Aug – 13th Nov 2023

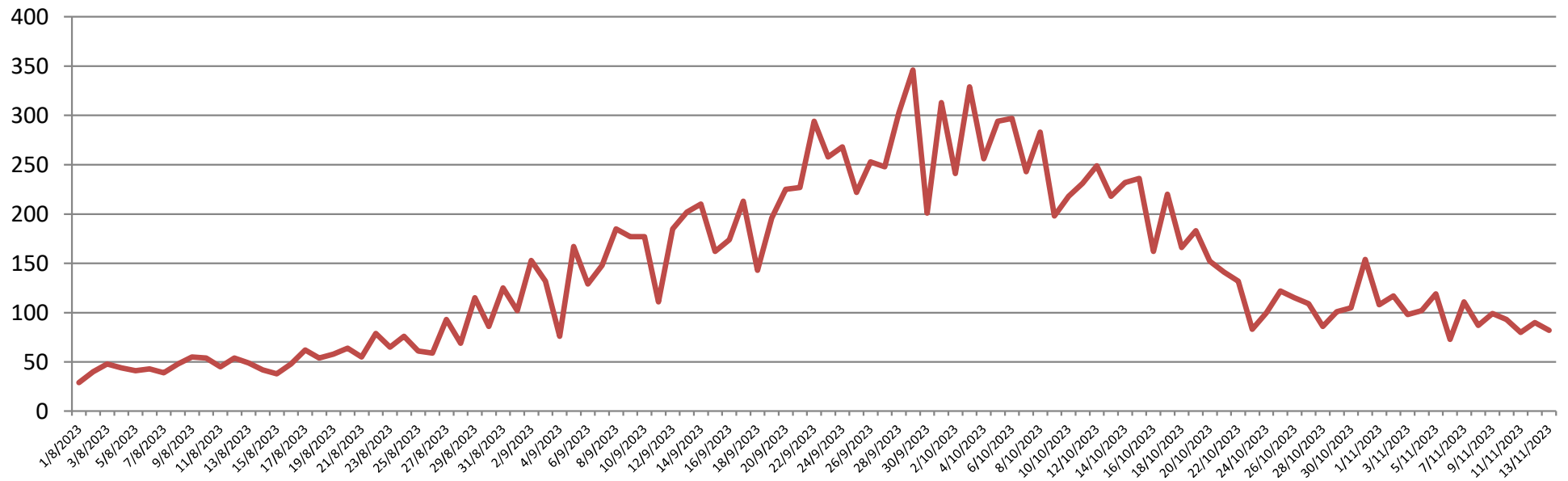
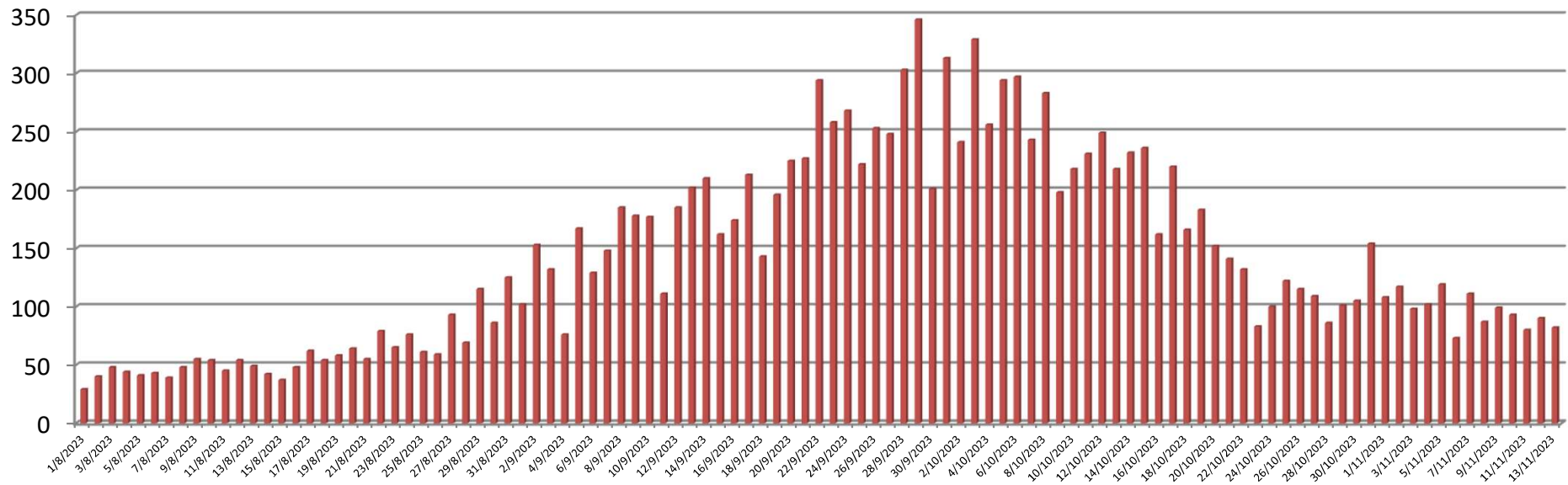
SL	INFORMATION REGARDING	RED CRESCENT HOSPITAL	HOLY FAMILY HOSPITAL	BENAZIR BHUTTO HOSPITAL	DISTRICT HEAD QUARTERS HOSP.	TOTAL
1	Patients registered in Outdoor patient department (OPD)	1990	7441	3985	1537	14953
2	Patients admitted	614	2034	811	493	3952
3	Confirmed Patients (Dengue fever)	366	1288	505	373	2532
4	Patients currently Admitted	46	-	-	-	46
5	Patients admitted during last 24 hours	27	-	-	-	27
6	Patients discharged in last 24 hours	31	-	-	-	31
7	Patients Presented to (OPD) in last 24 hours	82	-	-	-	82
8	Confirmed Patients in last 24 hours	15	-	-	-	15
9	Mortality (Total)	-	-	-	-	-

**DATA OF DENGUE PATIENTS AT ALLIED HOSPITALS
RAWALPINDI MEDICAL UNIVERSITY
1st Aug - 13th Nov 2023**

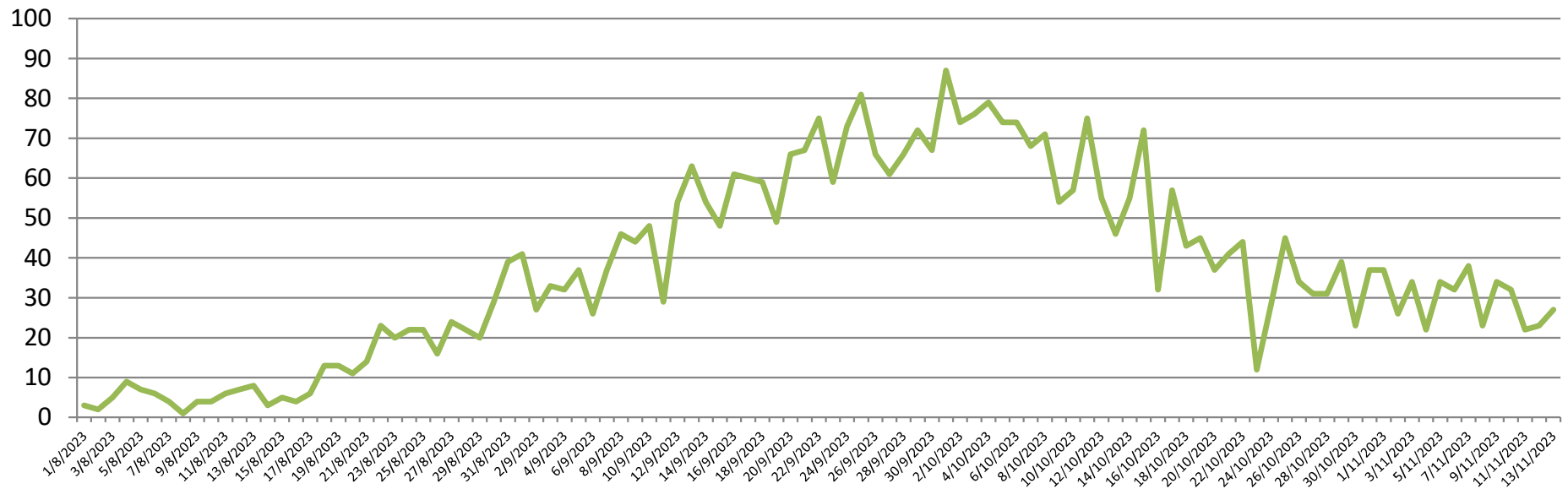
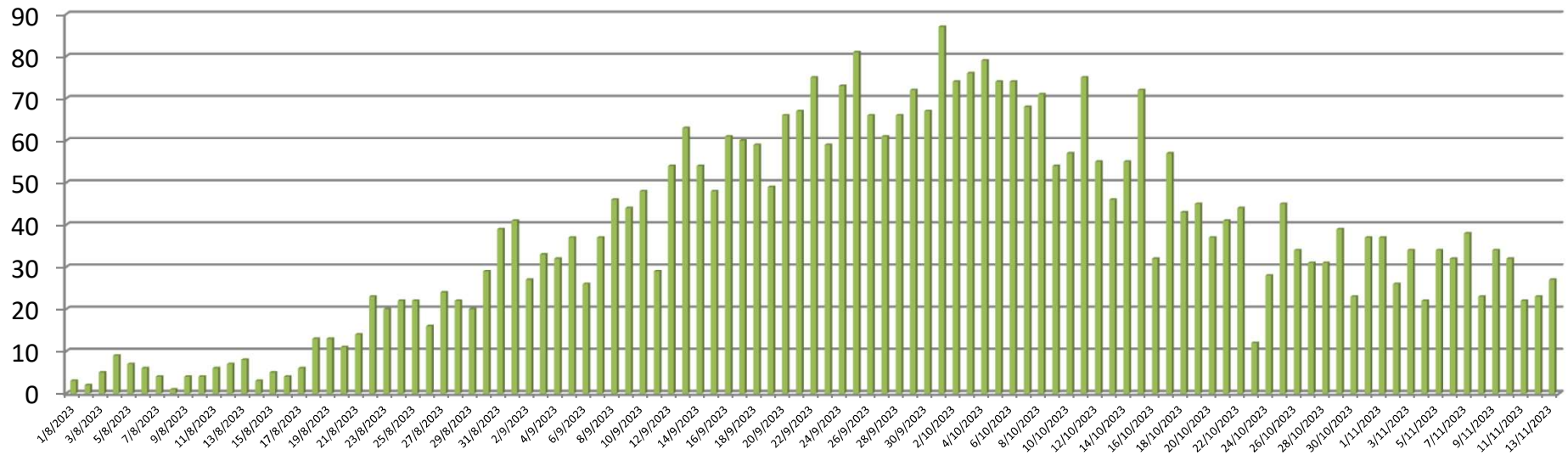


TREND OF LAST 24 HOURS DENGUE PATIENTS **OPD**, ALLIED HOSPITALS,

1st Aug To 13th Nov 2023



TREND OF LAST 24 HOURS DENGUE PATIENTS **ADMISSIONS ALLIED** HOSPITALS, 1st Aug to 13th Nov 2023



TREND OF LAST 24 HOURS DENGUE **CONFIRMED** PATIENTS ALLIED HOSPITALS, 1st Aug to 13th Nov 2023

