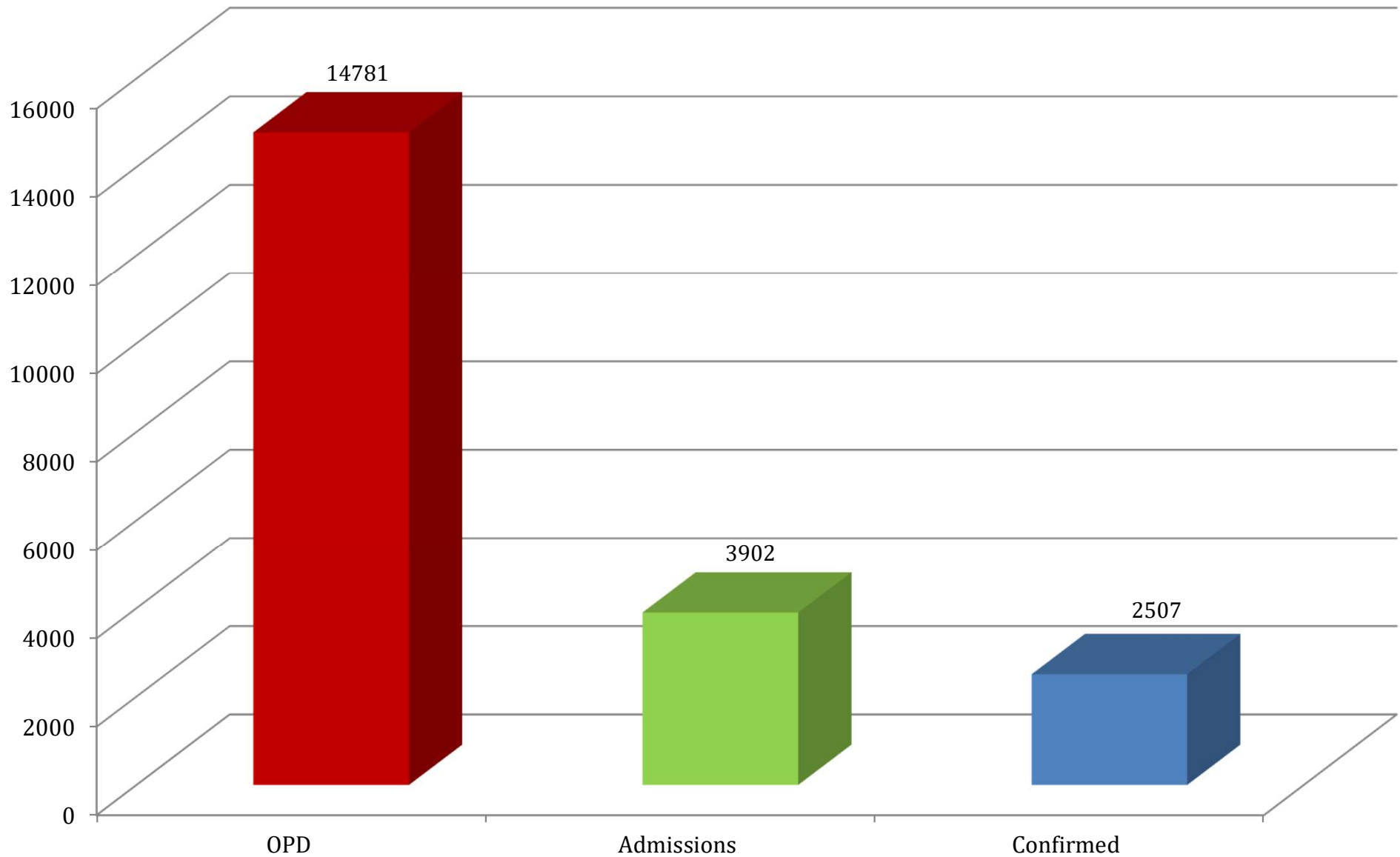


DATA OF DENGUE PATIENTS AT ALLIED HOSPITALS

1st Aug – 11th Nov 2023

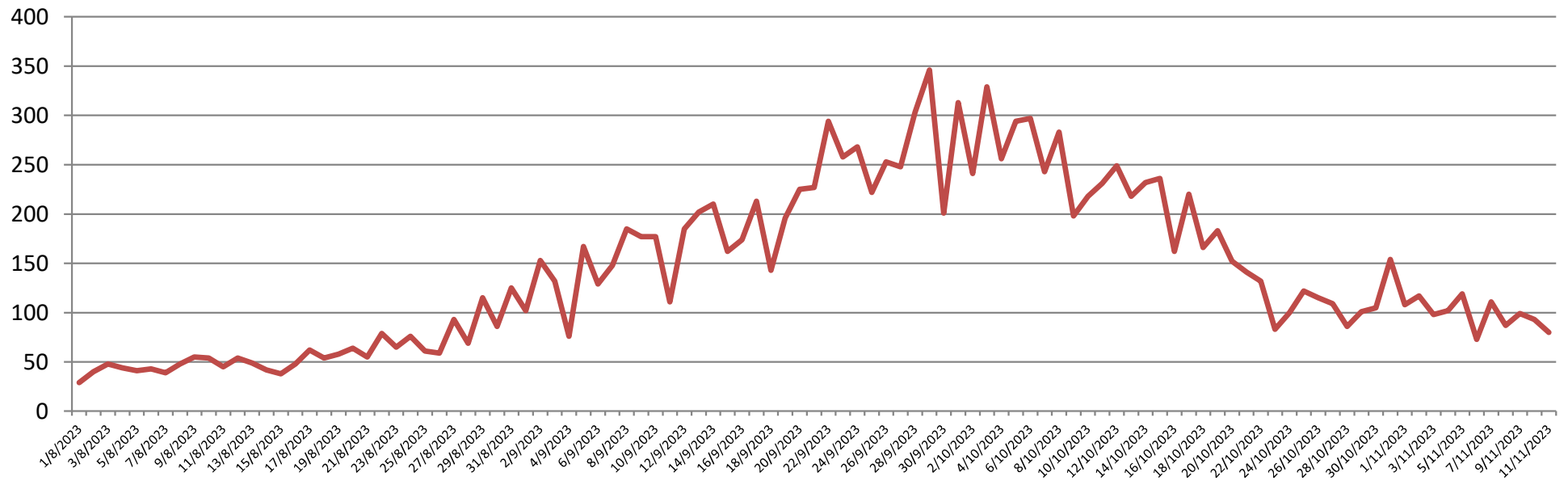
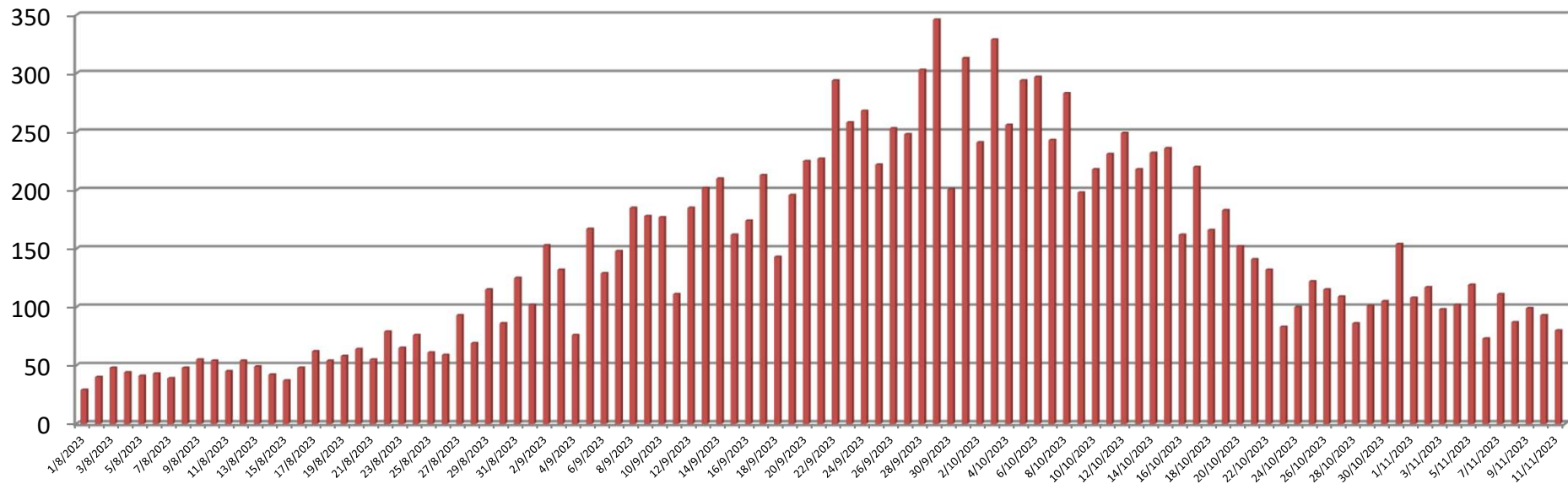
SL #	INFORMATION REGARDING	RED CRESCENT HOSPITAL	HOLY FAMILY HOSPITAL	BENAZIR BHUTTO HOSPITAL	DISTRICT HEAD QUARTERS HOSP.	TOTAL
1	Patients registered in Outdoor patient department (OPD)	1818	7441	3985	1537	14781
2	Patients admitted	564	2034	811	493	3902
3	Confirmed Patients (Dengue fever)	341	1288	505	373	2507
4	Patients currently Admitted	40	-	-	-	40
5	Patients admitted during last 24 hours	22	-	-	-	22
6	Patients discharged in last 24 hours	31	-	-	-	31
7	Patients Presented to (OPD) in last 24 hours	80	-	-	-	80
8	Confirmed Patients in last 24 hours	18	-	-	-	18
9	Mortality (Total)	-	-	-	-	-

**DATA OF DENGUE PATIENTS AT ALLIED HOSPITALS
RAWALPINDI MEDICAL UNIVERSITY
1st Aug - 11th Nov 2023**



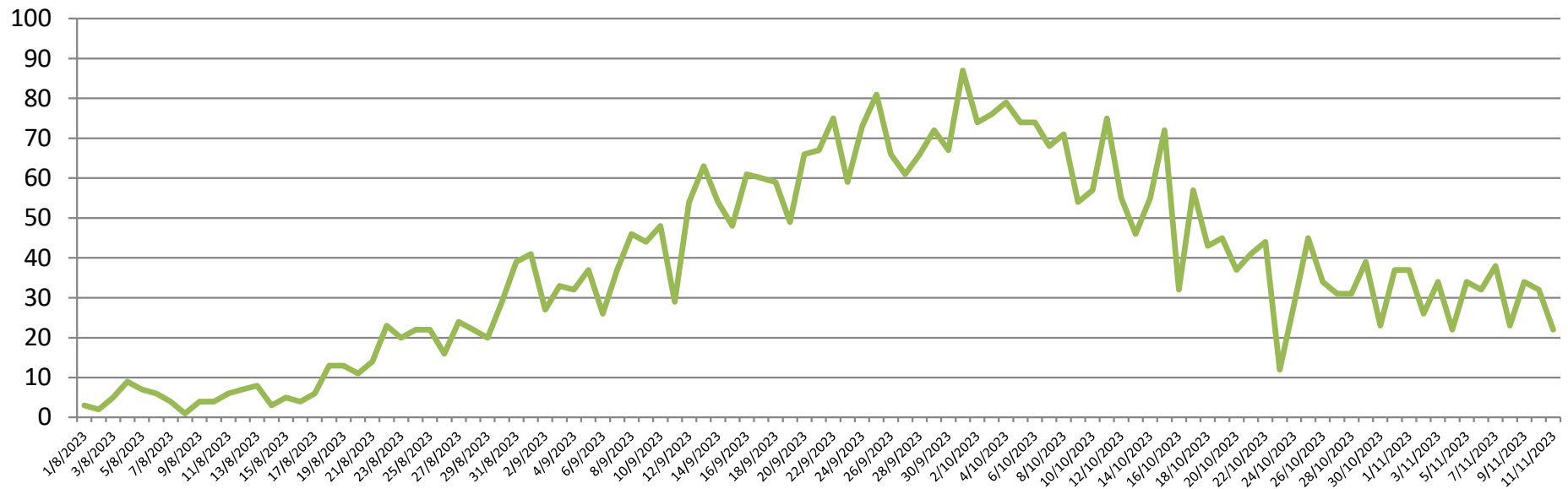
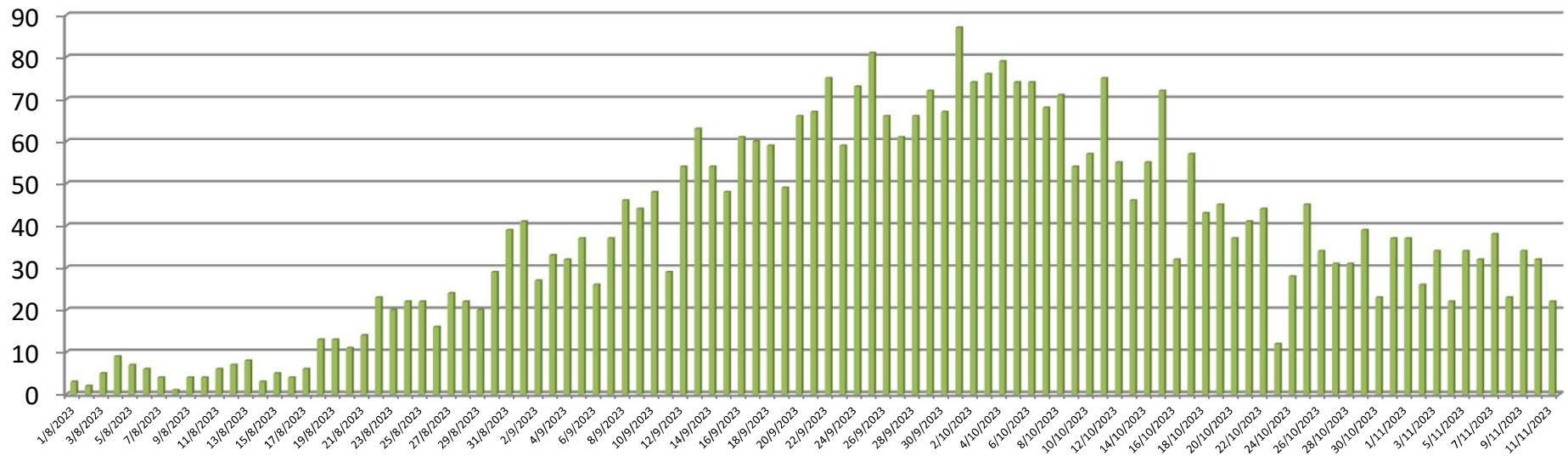
TREND OF LAST 24 HOURS DENGUE PATIENTS OPD, ALLIED HOSPITALS,

1st Aug To 11th Nov 2023



TREND OF LAST 24 HOURS DENGUE PATIENTS **ADMISSIONS** ALLIED HOSPITALS,

1st Aug to 11th Nov 2023



TREND OF LAST 24 HOURS DENGUE **CONFIRMED** PATIENTS ALLIED HOSPITALS, 1st Aug to 11th Nov 2023

