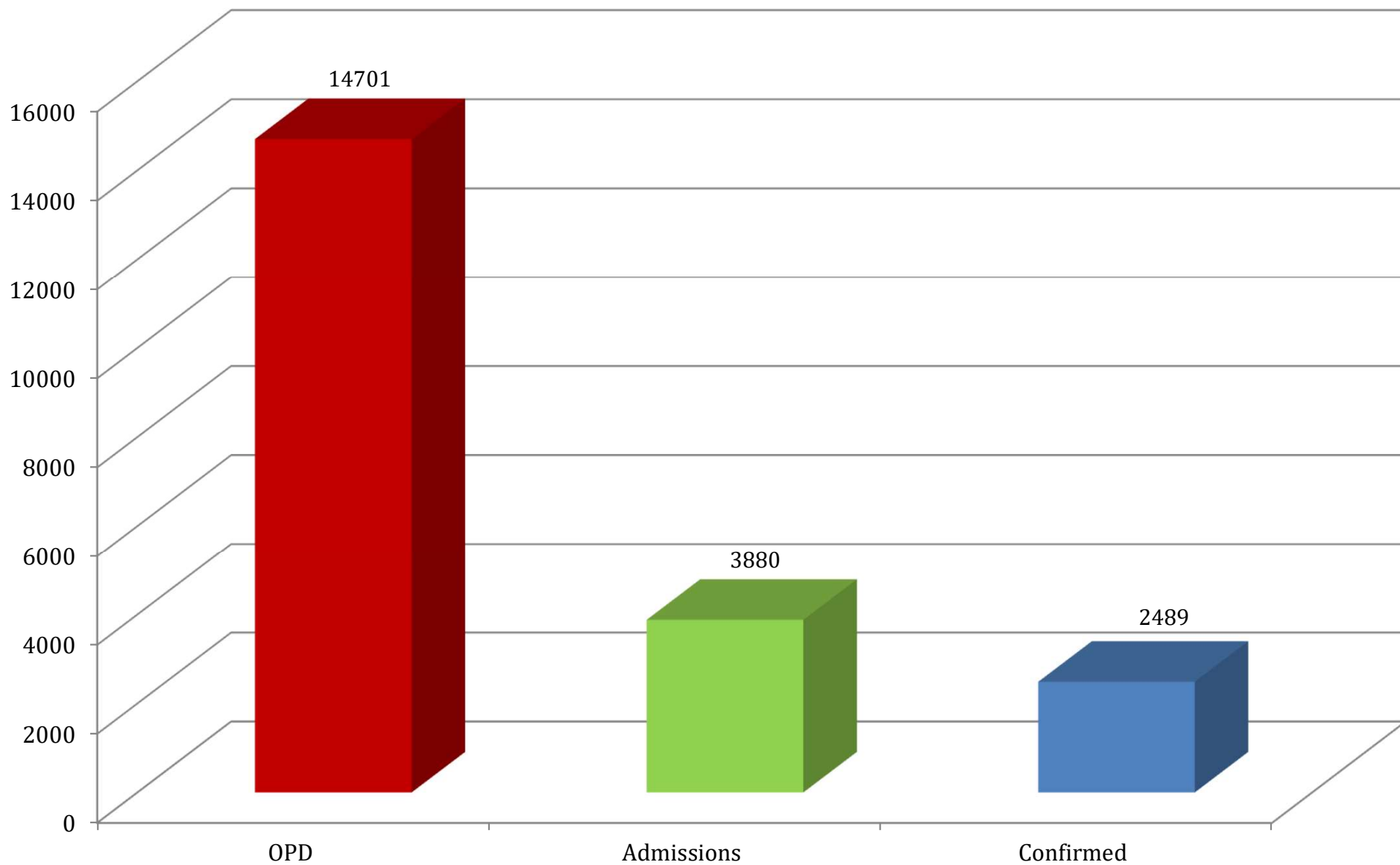


DATA OF DENGUE PATIENTS AT ALLIED HOSPITALS

1st Aug – 10th Nov 2023

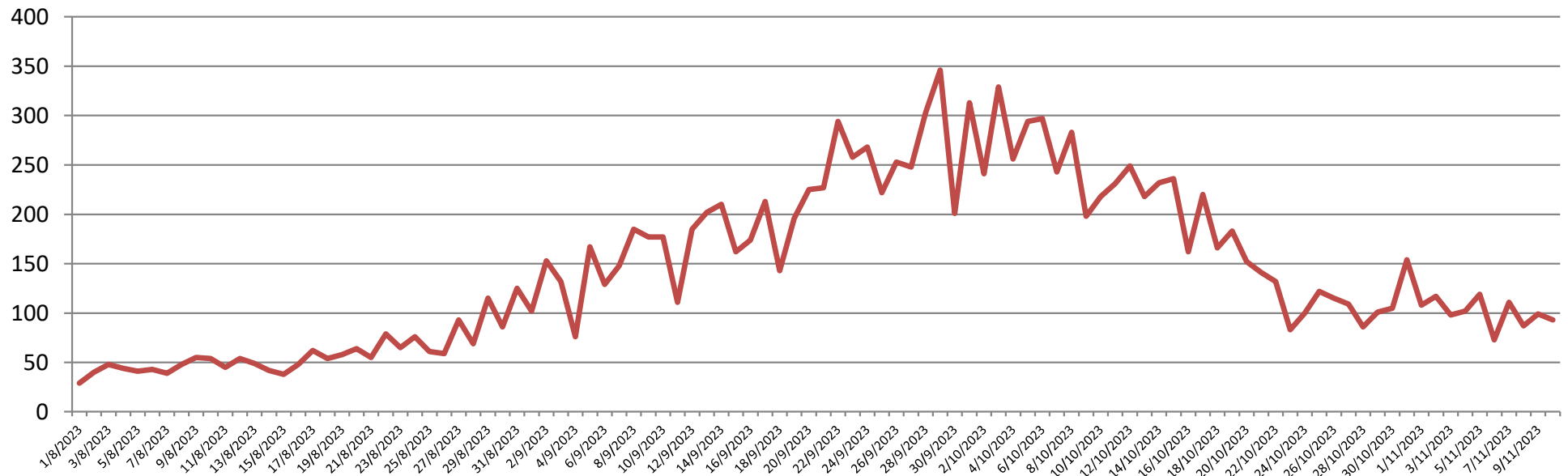
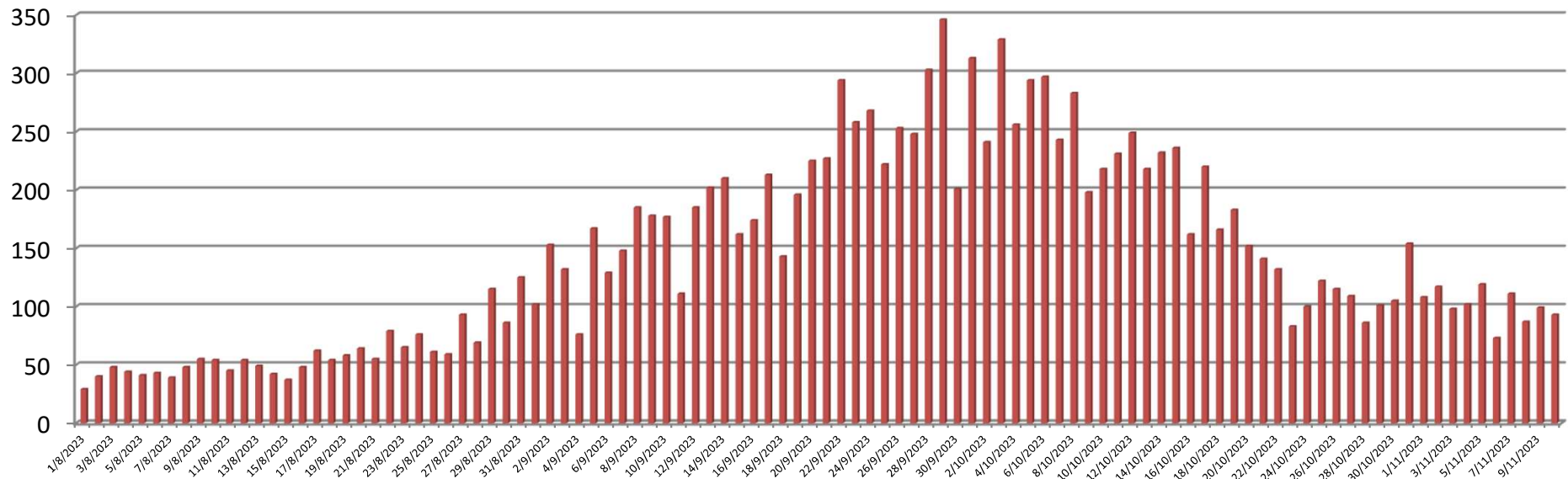
SL #	INFORMATION REGARDING	RED CRESCENT HOSPITAL	HOLY FAMILY HOSPITAL	BENAZIR BHUTTO HOSPITAL	DISTRICT HEAD QUARTERS HOSP.	TOTAL
1	Patients registered in Outdoor patient department (OPD)	1738	7441	3985	1537	14701
2	Patients admitted	542	2034	811	493	3880
3	Confirmed Patients (Dengue fever)	323	1288	505	373	2489
4	Patients currently Admitted	49	-	-	-	49
5	Patients admitted during last 24 hours	32	-	-	-	32
6	Patients discharged in last 24 hours	39	-	-	-	39
7	Patients Presented to (OPD) in last 24 hours	93	-	-	-	93
8	Confirmed Patients in last 24 hours	16	-	-	-	16
9	Mortality (Total)	-	-	-	-	-

**DATA OF DENGUE PATIENTS AT ALLIED HOSPITALS
RAWALPINDI MEDICAL UNIVERSITY
1st Aug - 10th Nov 2023**

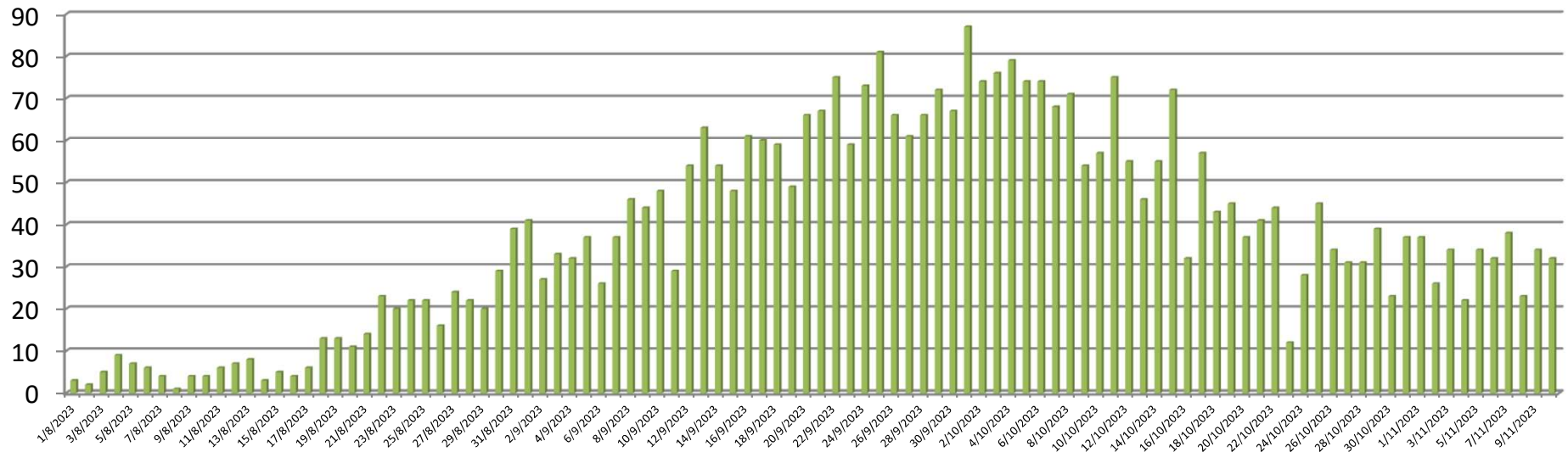


TREND OF LAST 24 HOURS DENGUE PATIENTS **OPD**, ALLIED HOSPITALS,

1st Aug To 10th Nov 2023



TREND OF LAST 24 HOURS DENGUE PATIENTS **ADMISSIONS ALLIED** HOSPITALS, 1st Aug to 10th Nov 2023



TREND OF LAST 24 HOURS DENGUE **CONFIRMED** PATIENTS ALLIED HOSPITALS, 1st Aug to 10th Nov 2023

