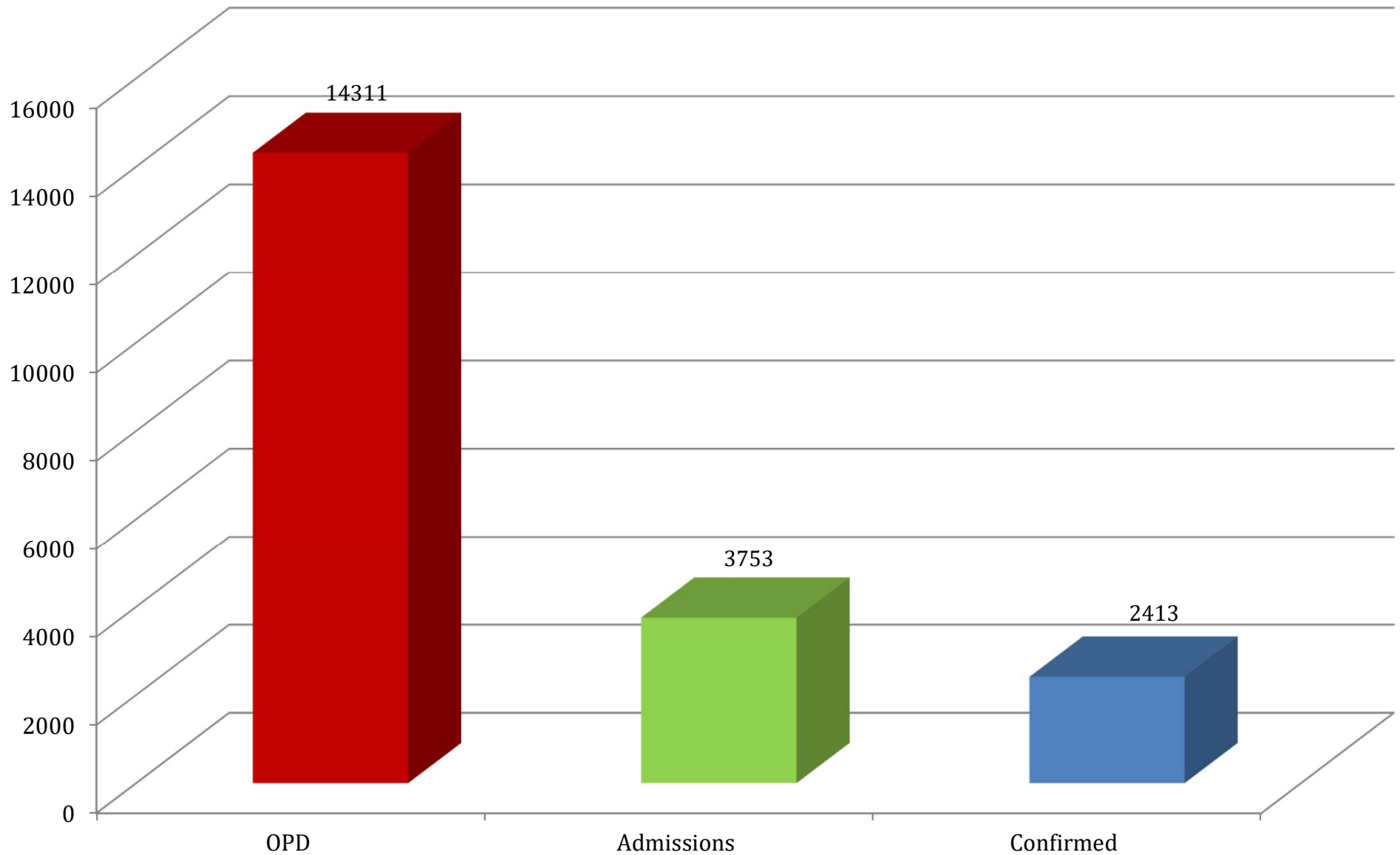


## DATA OF DENGUE PATIENTS AT ALLIED HOSPITALS

1<sup>st</sup> Aug – 6<sup>th</sup> Nov 2023

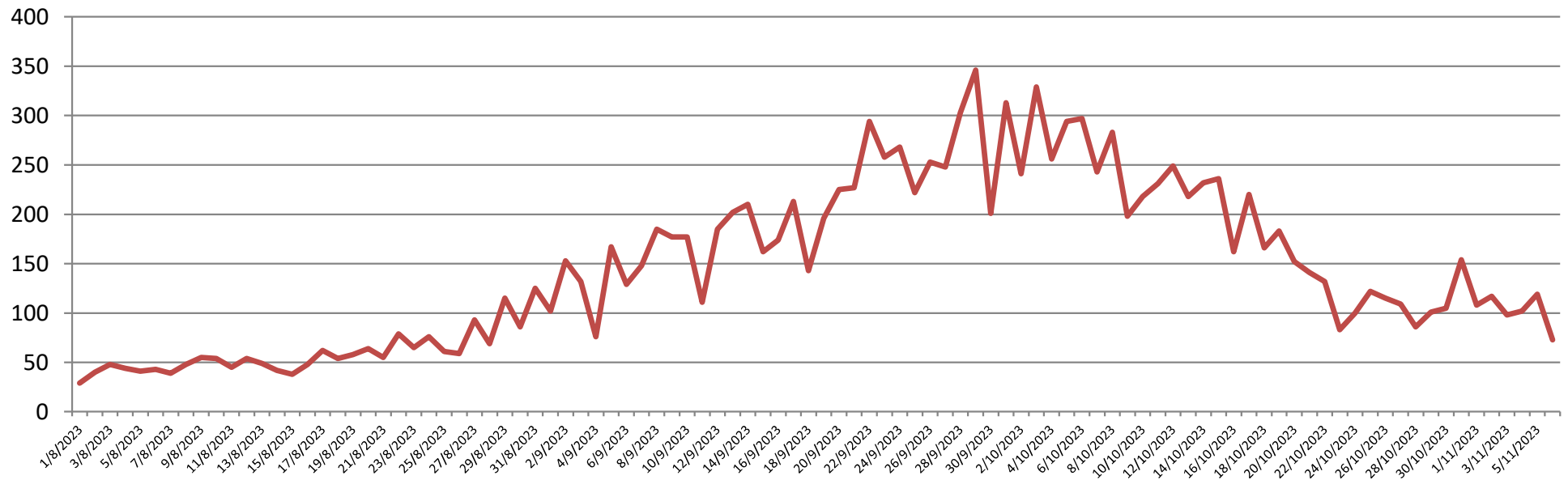
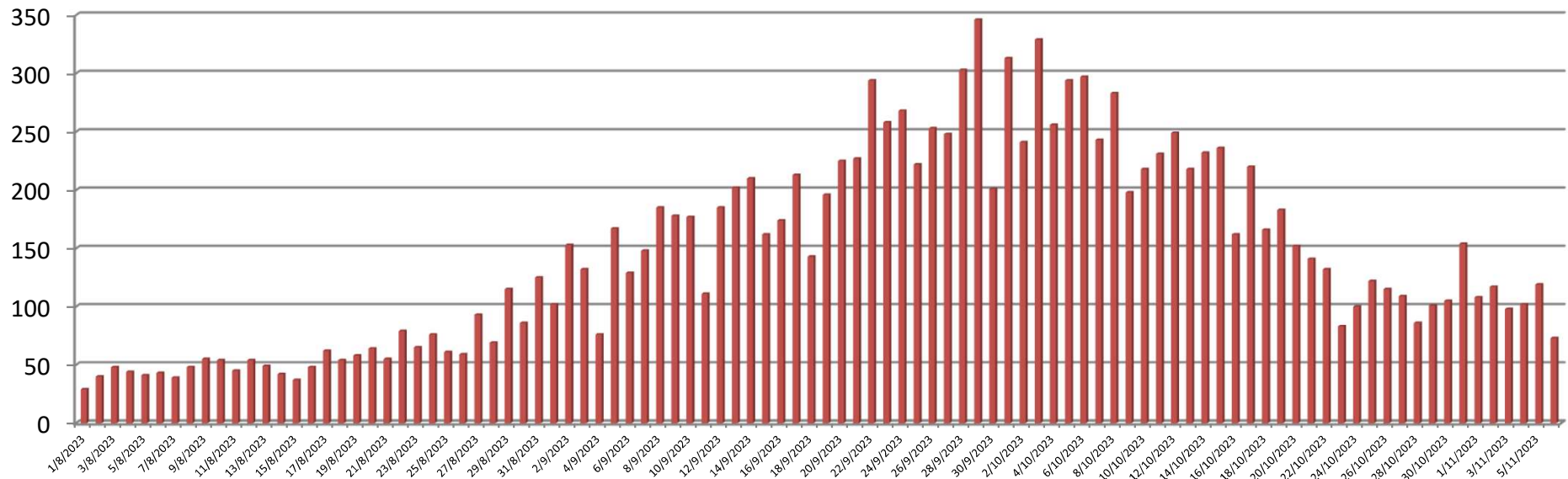
SL #	INFORMATION REGARDING	RED CRESCENT HOSPITAL	HOLY FAMILY HOSPITAL	BENAZIR BHUTTO HOSPITAL	DISTRICT HEAD QUARTERS HOSP.	TOTAL
1	Patients registered in Outdoor patient department (OPD)	1348	7441	3985	1537	14311
2	Patients admitted	415	2034	811	493	3753
3	Confirmed Patients (Dengue fever)	247	1288	505	373	2413
4	Patients currently Admitted	60	-	-	-	60
5	Patients admitted during last 24 hours	32	-	-	-	32
6	Patients discharged in last 24 hours	16	-	-	-	16
7	Patients Presented to (OPD) in last 24 hours	73	-	-	-	73
8	Confirmed Patients in last 24 hours	17	-	-	-	17
9	Mortality (Total)	-	-	-	-	-

**DATA OF DENGUE PATIENTS AT ALLIED HOSPITALS  
RAWALPINDI MEDICAL UNIVERSITY  
1<sup>st</sup> Aug - 6<sup>th</sup> Nov 2023**



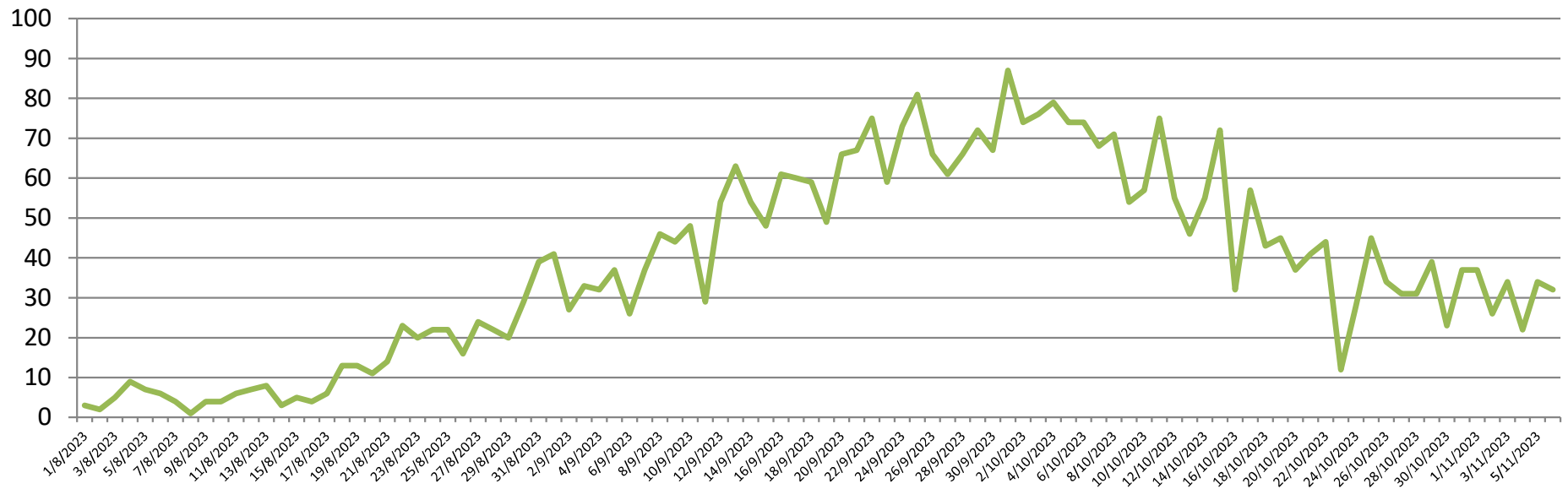
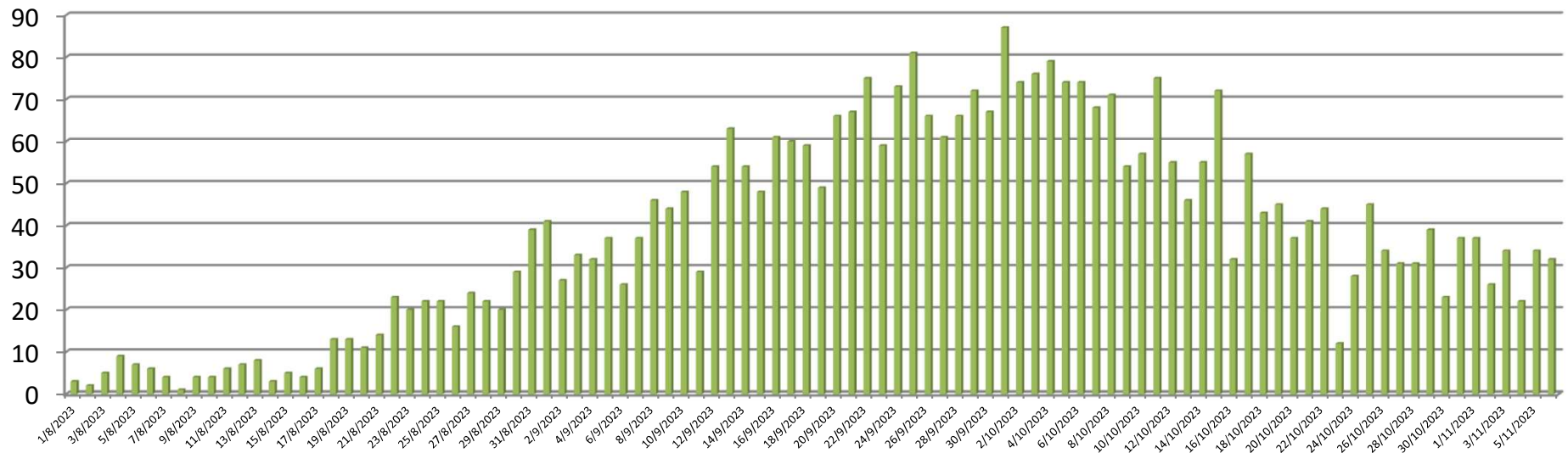
# TREND OF LAST 24 HOURS DENGUE PATIENTS **OPD**, ALLIED HOSPITALS,

1<sup>st</sup> Aug To 6<sup>th</sup> Nov 2023



# TREND OF LAST 24 HOURS DENGUE PATIENTS **ADMISSIONS** ALLIED HOSPITALS,

1<sup>st</sup> Aug to 6<sup>th</sup> Nov 2023



# TREND OF LAST 24 HOURS DENGUE **CONFIRMED** PATIENTS ALLIED HOSPITALS, 1<sup>st</sup> Aug to 6<sup>th</sup> Nov 2023

