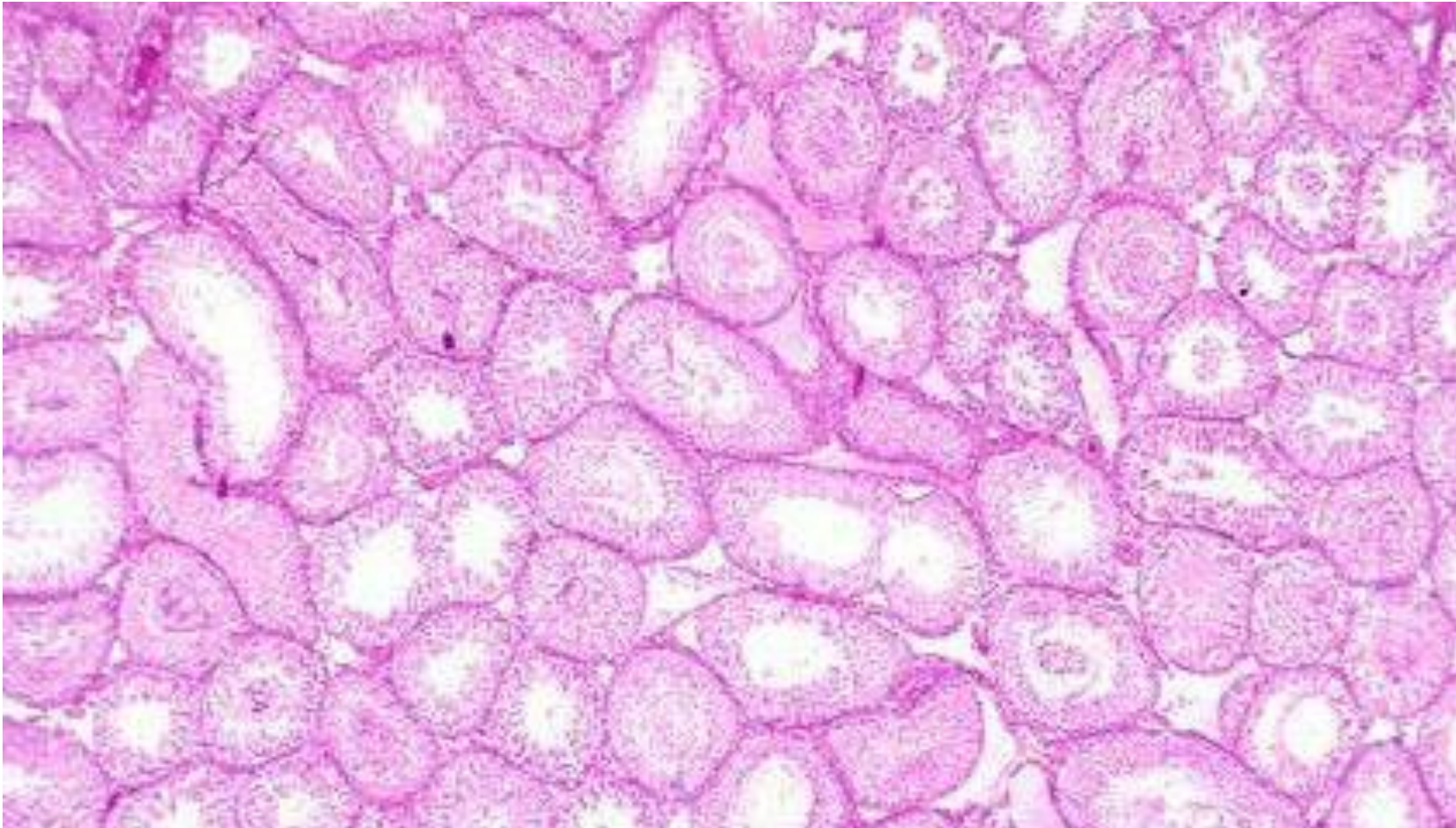
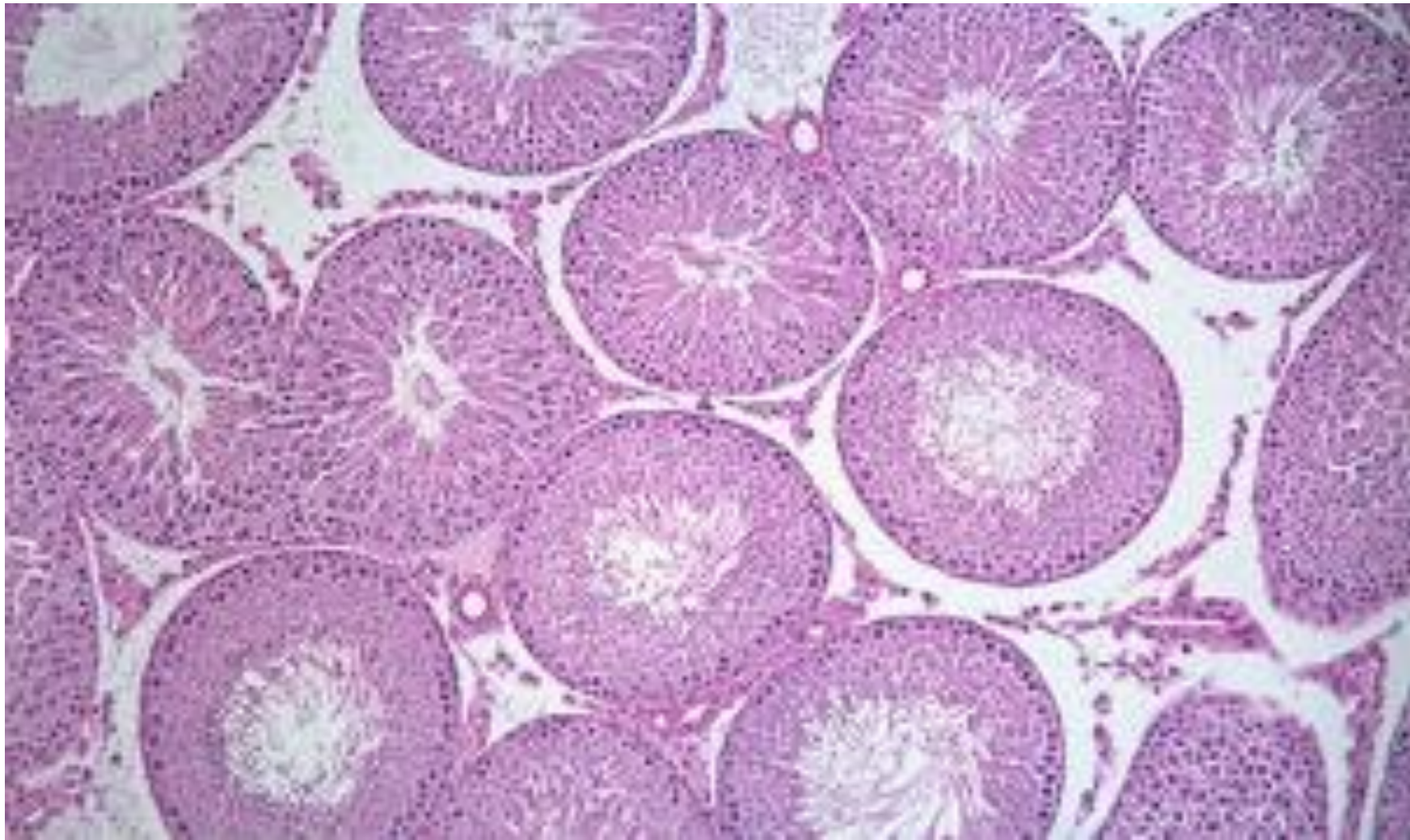


Male genital system (practical)

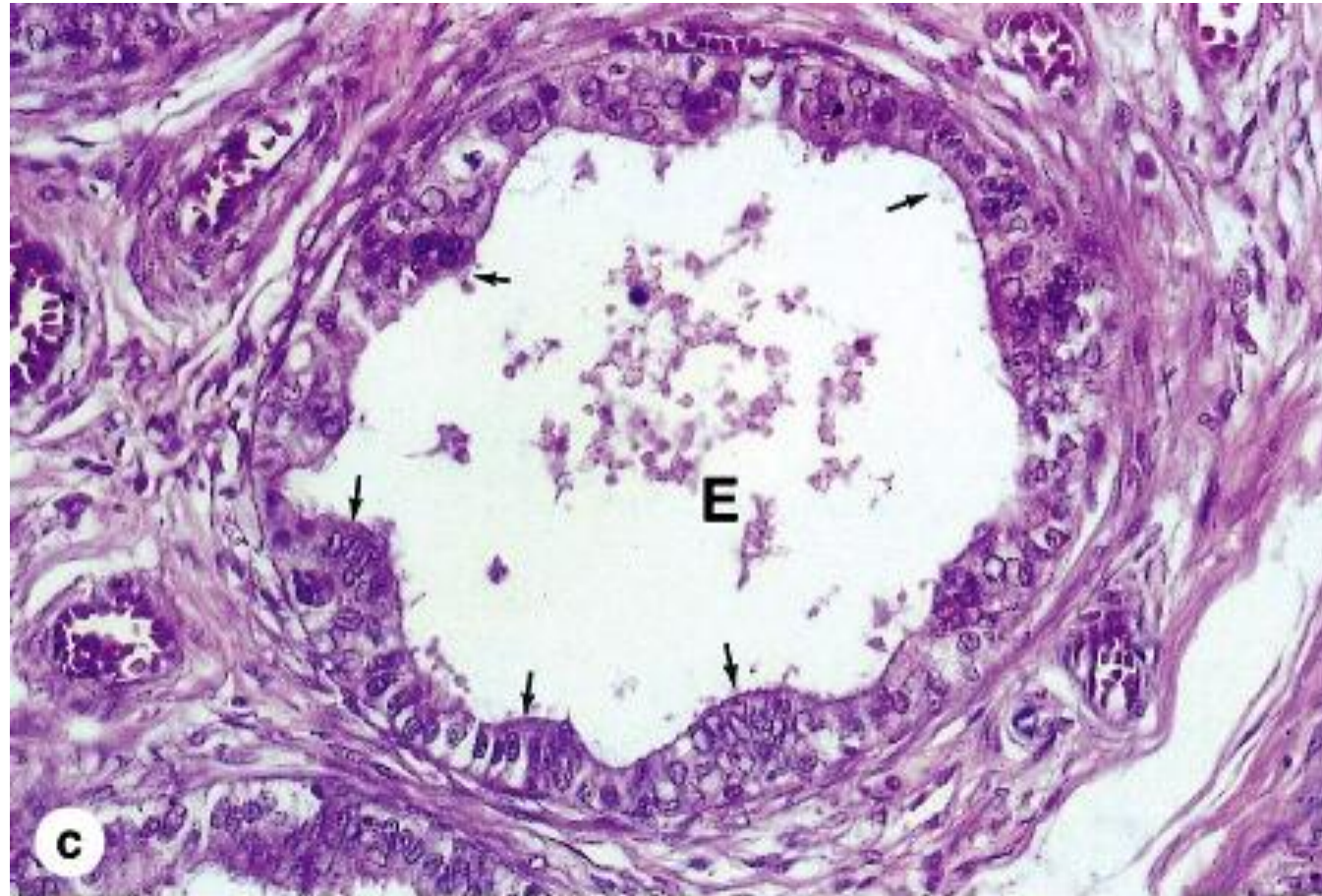
Testis (low magnification)



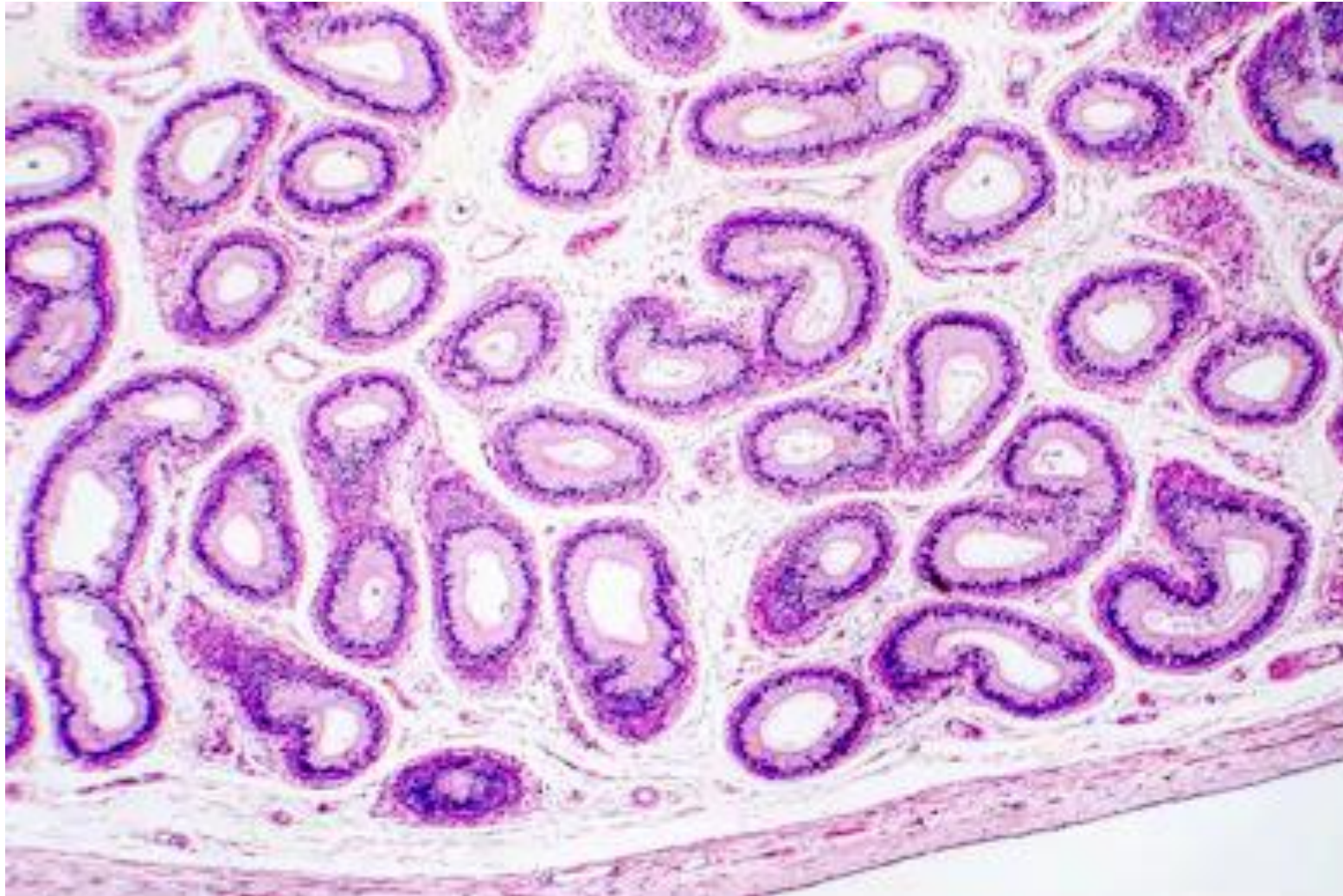
Testis (high magnification)



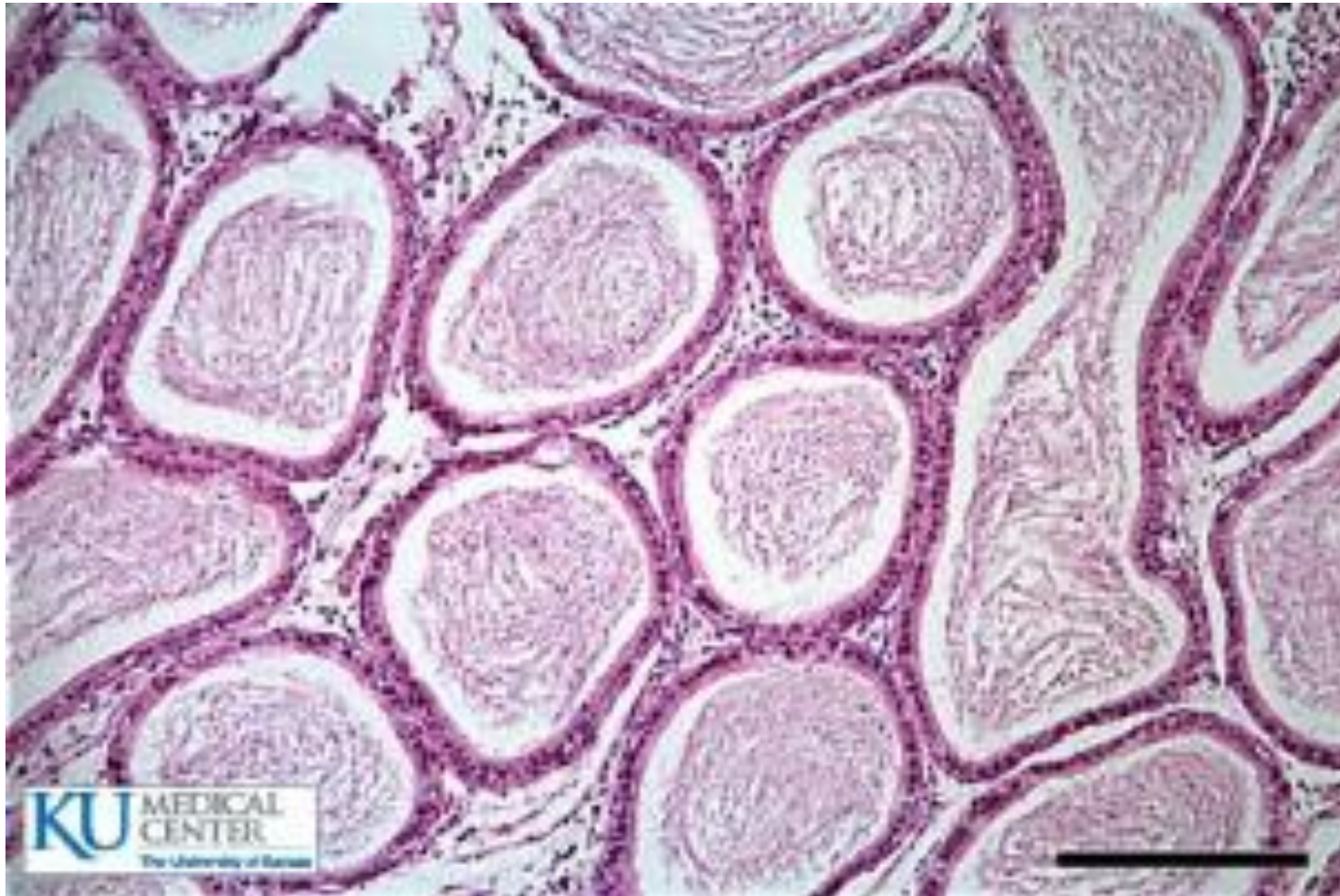
Efferent ductule (TS)



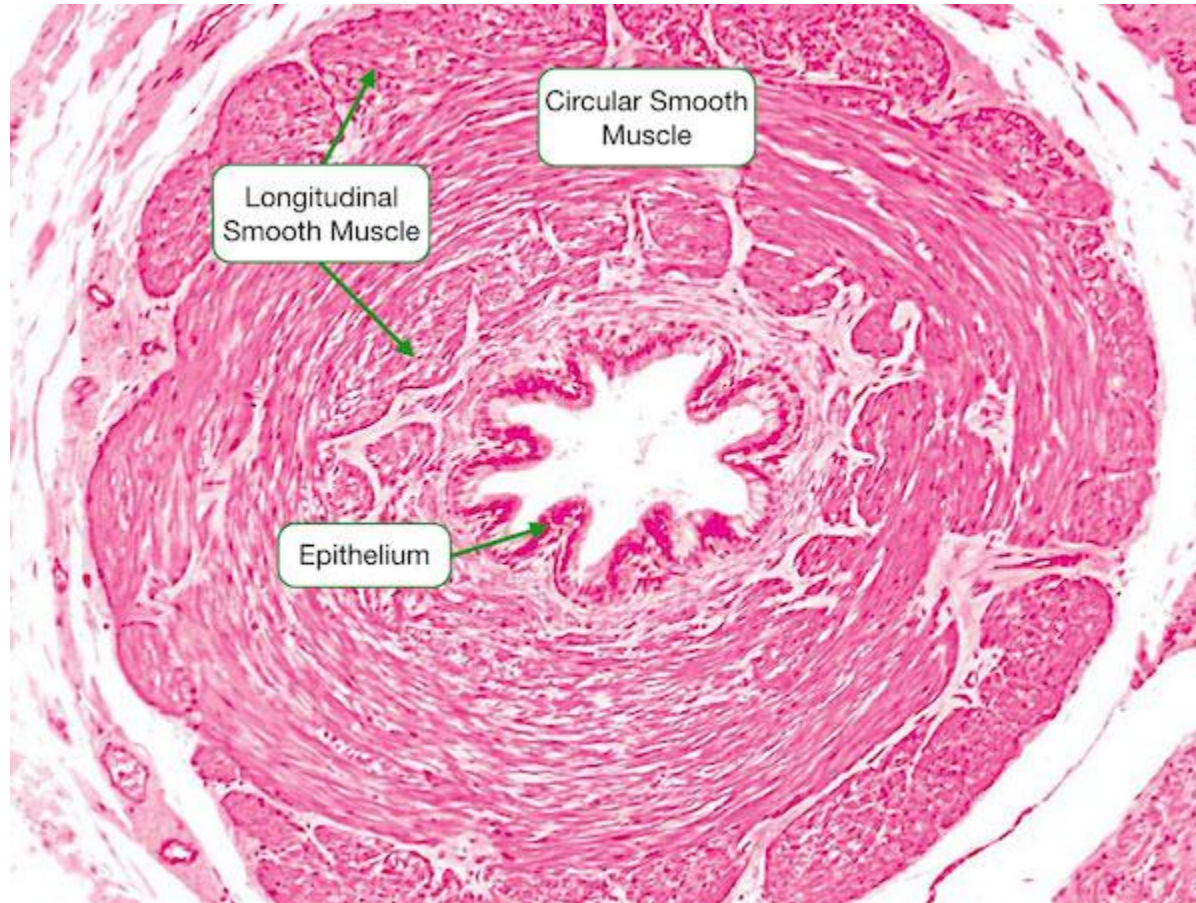
Duct of epididymis (TS) low magnification



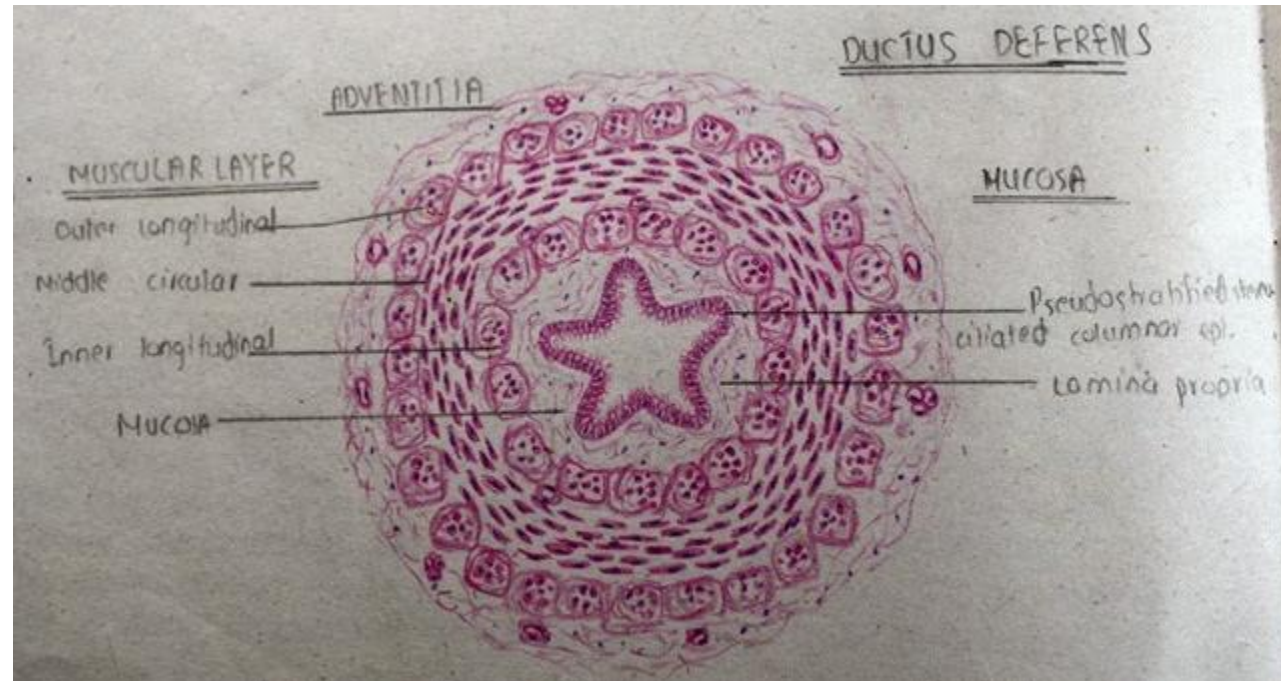
Duct of epididymis (TS) high magnification



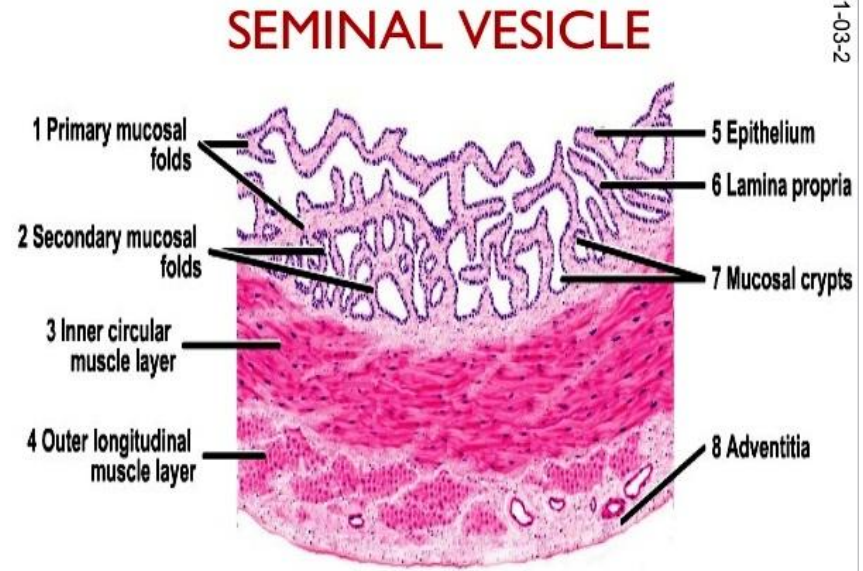
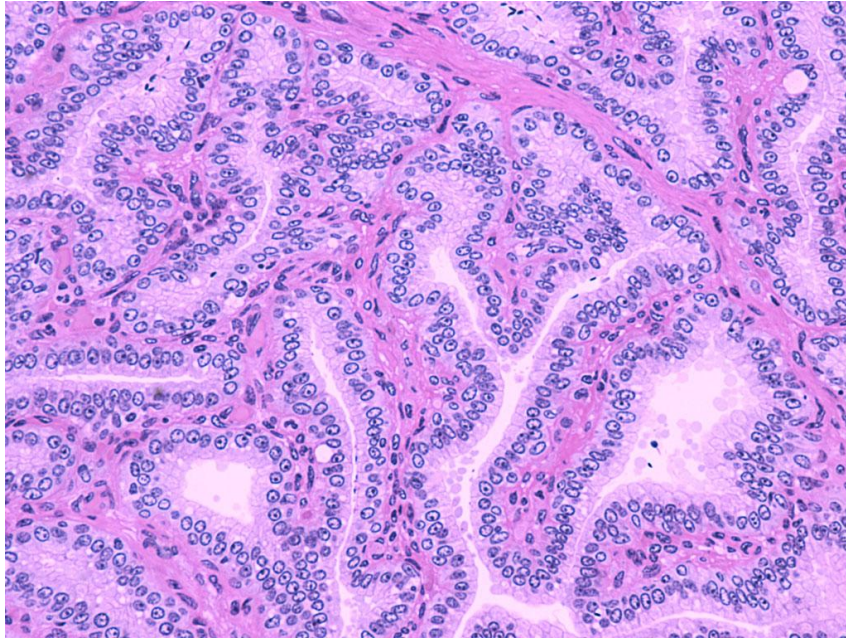
Ductus(Vas) deferens



Ductus(Vas) deferens (drawing)



Seminal vesicles



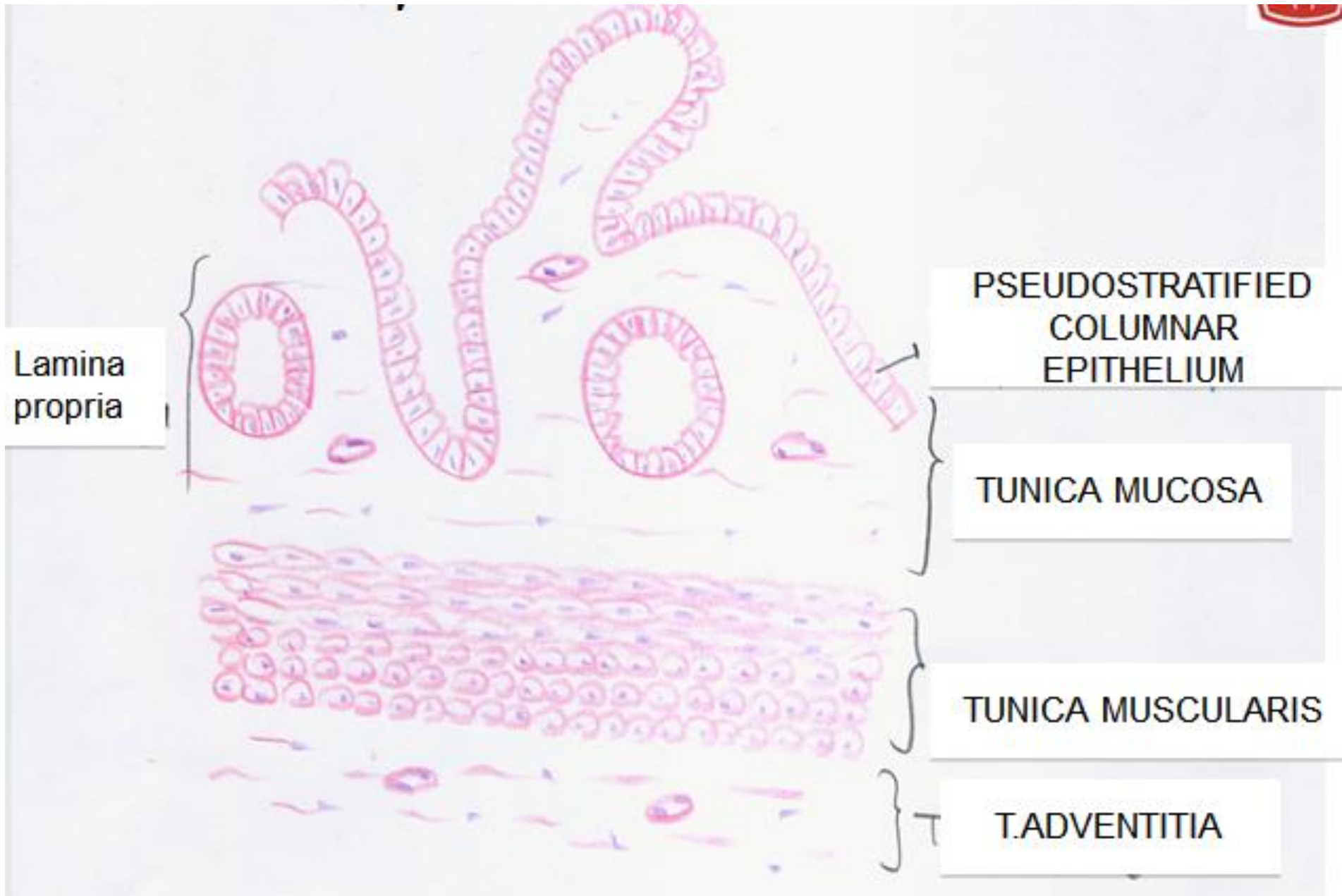
Lamina propria

PSEUDOSTRATIFIED
COLUMNAR
EPITHELIUM

TUNICA MUCOSA

TUNICA MUSCULARIS

T.ADVENTITIA



prostate

