

HISTOLOGY PRACTICAL

First year MBBS

BLOOD AND IMMUNITY

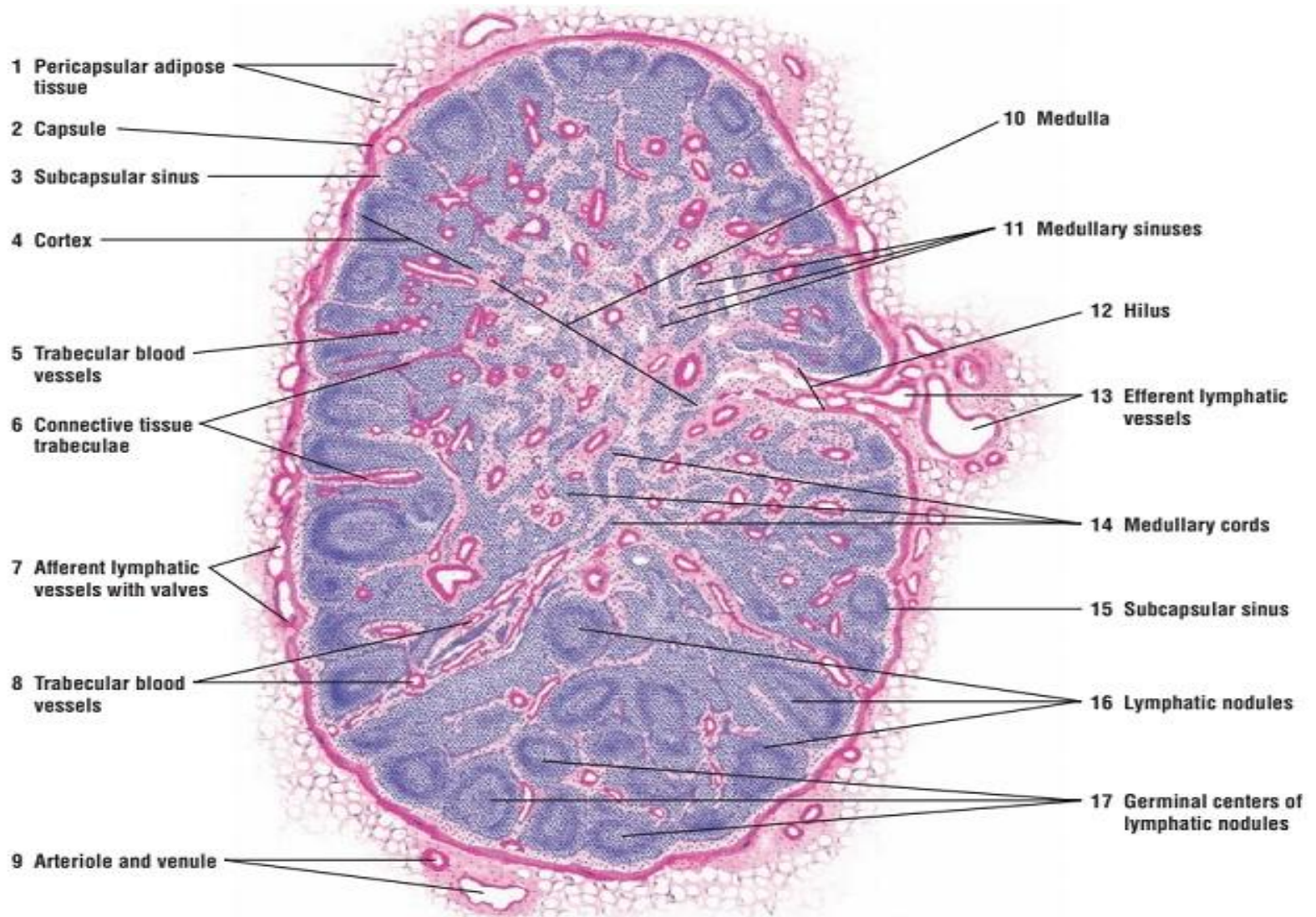
CONTENT

BLOOD AND IMMUNITY	NAME OF PRCTICAL	WEEK
1	LYMPH NODE	week1
2	THYMUS	Week 2
3	TONSILS	week3
4	SPLEEN	Week 4

PRACTICAL 1(LYMPH NODE)

- **LYMPH NODE IDENTIFICATION POINTS**
 - ❖ LYMPH NODULES WITHOUT CENTAL ARTERIOL ARE SITUATED IN THE CORTEX
 - ❖ MEDULLARY CORDS ARE PRESENT

DIAGRAM; LYMPH NODE

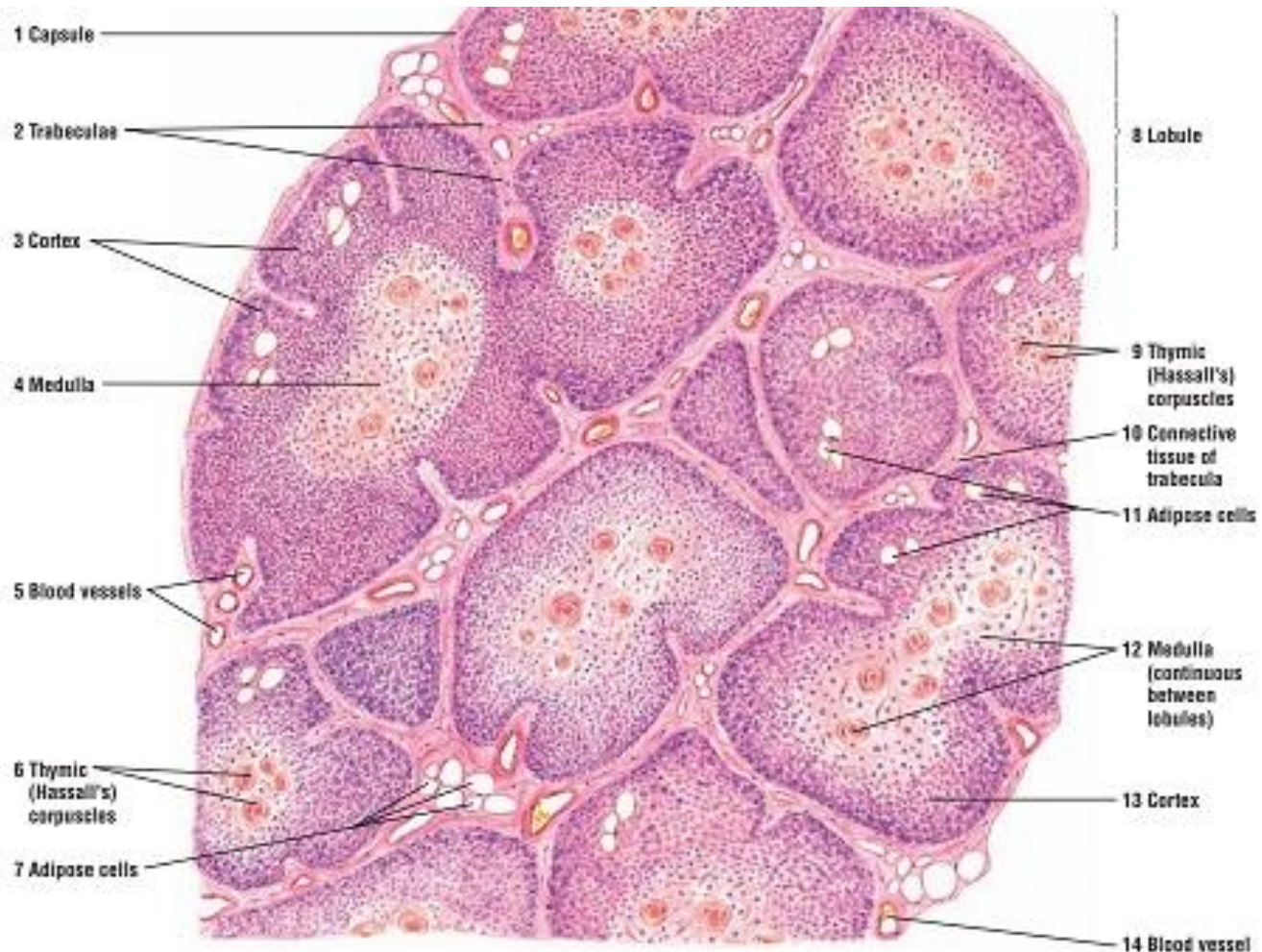


PRCTICAL NUMBER 2(THYMUS)

- **IDENTIFICATION POINTS**

- ❖ CHARACTERISTIC LOBULES
- ❖ THYMIC CORPUSCLES (SEEN AS RED CONDENSATION SURROUNDED BY A PALE STAINING AREA IN EACH LOBULE)
- ❖ NO SINUSES
- ❖ NO AFFERENT LYMPHATICS

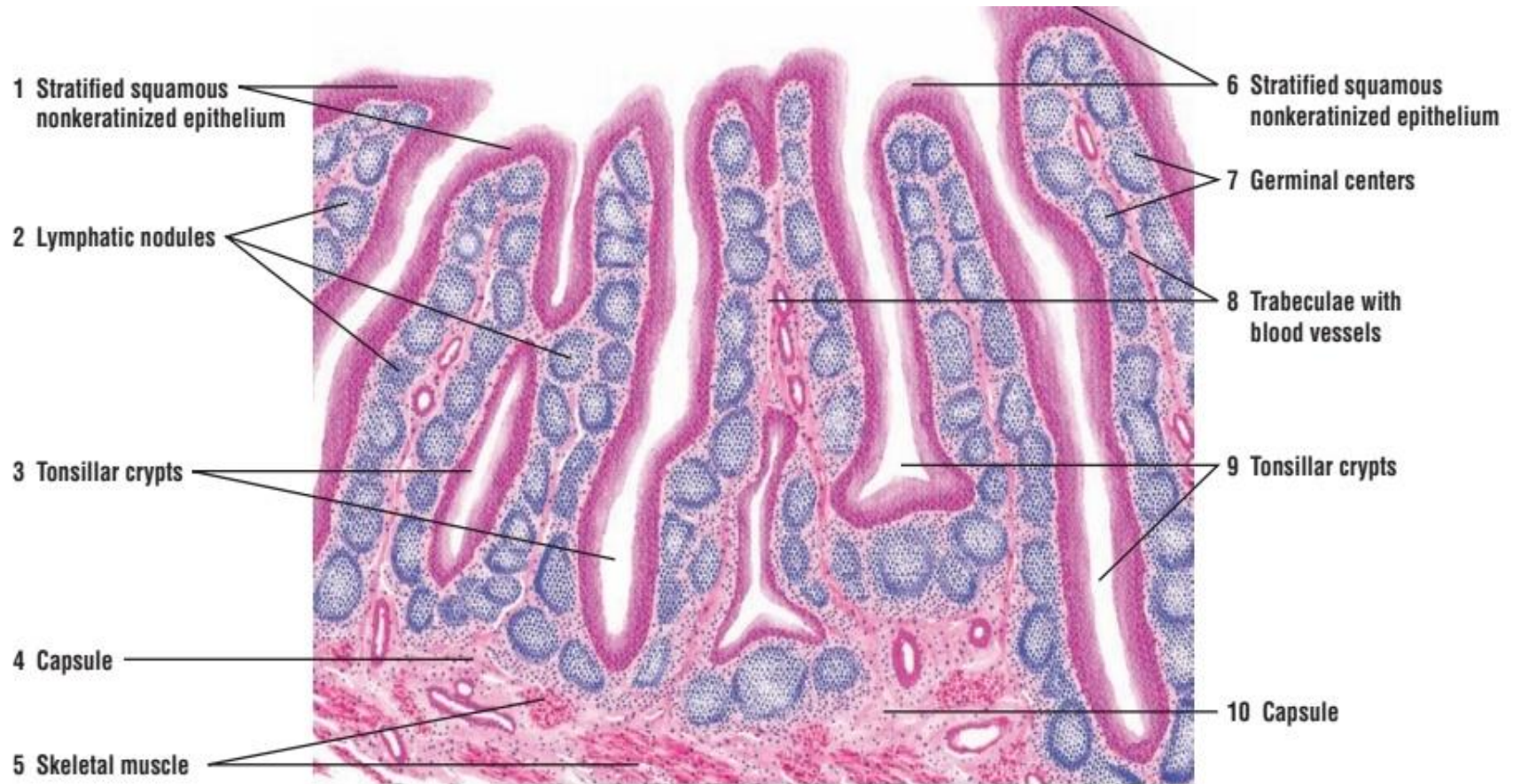
Diagram (thymus)



PRACTICAL 3 : PALATINE TONSIL

- IDENTIFICATION POINTS
 - ❖ CHARACTERISTIC NONKERATINIZED STRATIFIED SQUAMOUS EPITHELIAL COVERING
 - ❖ TONSILLAR EPITHELIAL CRYPTS PRESENT
 - ❖ NO LYMPH SINUSES

DIAGRAM; PALATINE TONSIL



PRACTICAL 4; SPLEEN

- IDENTIFICATION POINTS OF SPLEEN
 - ❖ RED AND WHITE PULP CAN BE SEEN
 - ❖ NO DIFFERENTIATION INTO CORTEX AND MEDULLA
 - ❖ RED PULP HAS SPLENIC CORDS AND VENOUS SINUSES

DIAGRAM: SPLEEN

